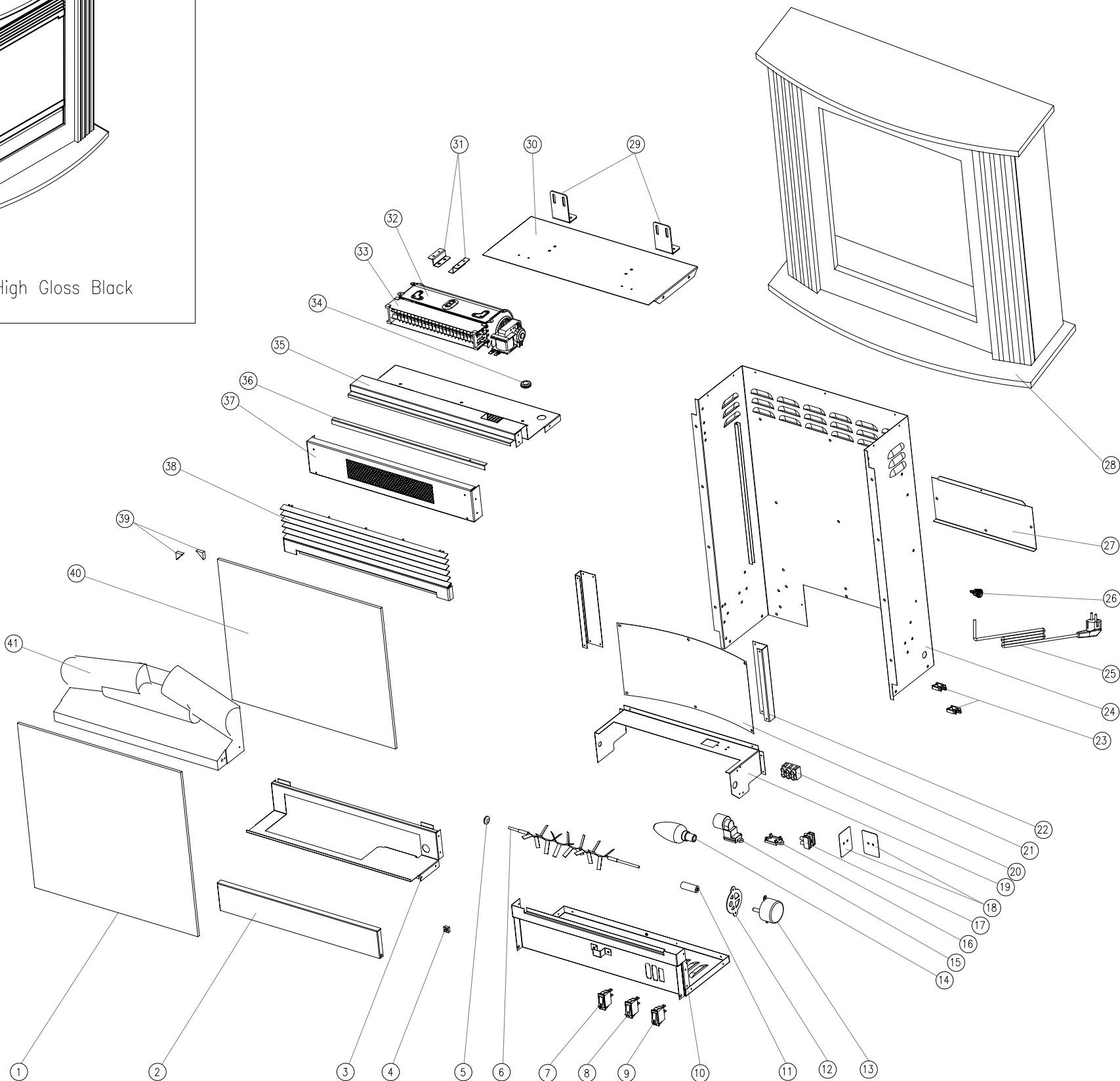
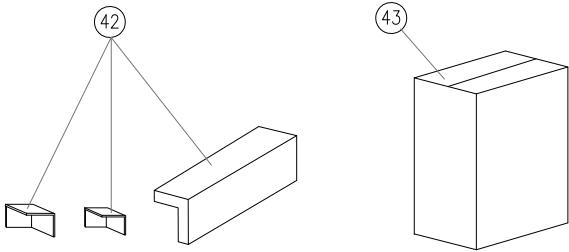


Mini Mozart High Gloss Black



Packaging ASS'Y

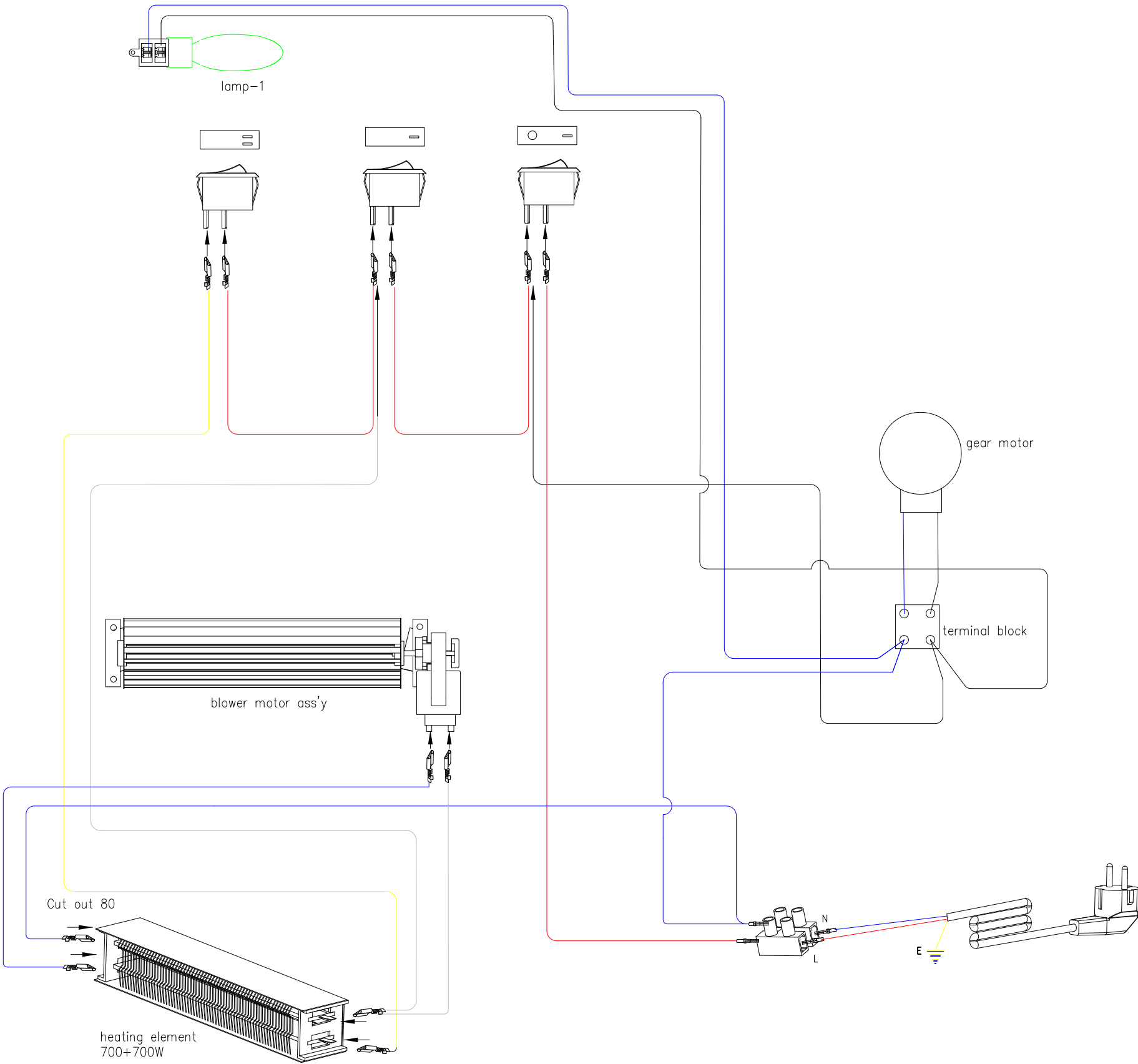


No.	PART NUMBER	REF.	ITEM DESCRIPTION	名称	SPEC.	(规格)	QTY.
43	2801020113101		Carton 202512	AJ31V-M彩包套码: 5011139202512	Brown box+color labels		1
42	28100113101		EPS set	AJ31V-M成品泡沫			1
41	44000113102		Log set	AJ31V喇叭大组	Poly Resin		1
40	270105008		Mirror glass	M1131薄玻璃			1
39	23290201003		Glass corner protector	玻璃护角	Rubber		2
38	340401003		Grille ass'y	AJ31V喇叭压条组合	GPMS,Flat,black powder coated		1
37	343001004		Grille fixing panel ass'y	AJ31V喇叭压条	GPMS,Flat,black powder coated		1
36	335301014		Mirror glass top bracket	M1131薄玻璃上挂条	GPMS,Flat,black powder coated		1
35	331901030		Inner top panel	AJ31V薄顶压板	GPMS,Flat,black powder coated		1
34	23190901016		Rubber Grommet ring ø16mm	ø16护线圈	Rubber		1
33	4304000509		Heating element ass'y (with cutout)	云母发热体组(带80度散热)	700W+700W 240V/TH11CA071-E 80°		1
32	420300005		Blower ass'y	99A-18-230风轮组	FEJ-B CLB 10W 230VAC 50Hz/TianChao		1
31	330501137		Blower fixing bracket	AJ31V风轮支架	GPMS,Flat,black powder coated		2
30	330301048		Top panel	AJ31V顶板	GPMS,Flat,black powder coated		1
29	334702008		MDF fixing bracket	AJ55机壳固定条	GPMS,Flat,black powder coated		2
28	M6903100MB		Mini Mozart Surround	AJ31V-M高光黑木箱	MDF+High Gloss Black/marble front		1
27	331101042		Light Cover	M1131遮光板	GPMS,Flat,black powder coated		1
26	23120101002		Power cord anchor	电源线卡卡	PA		1
25	250101205023		EU plug and cord set	AJ30电源线	3610mm2 2.85H H05VV-F 500V/105° 16A/250V VDE		1
24	340101010		Chassis	AJ31V壳体组合	GPMS,Flat,black powder coated		1
23	23100101001		Wire clip	左导线卡	PA		2
22	330502050		Reflector fixing brcket	AJ118大喇叭支架	GPMS,Flat,black powder coated		2
21	351103036		Reflector flame panel	M1131火焰板	Polishing aluminium sheet+black print		1
20	2110020032		Terminal block	黑色接线柱	250V 1.5mm Fuerj		1
19	330401005		Gear motor bracket	M1131灯架体	GPMS,Flat,black powder coated		1
18	2119503501		Terminal block insulation sheet	接线柱绝缘板	35*38mm N/L marked		2
17	2110030121		Terminal block	白色接线柱	PA12 500V		1
16	23082201001		Lamp holder cover	E14灯座盖板	PP		1
15	2104250001		Lamp holder	E14灯座	FEJD-1 2A 250Vac 135T PBT		1
14	21030124006002		Bulb	60W E14 GE节能灯泡	E14 230/240V 60W GE		1
13	210102230101		Gear motor	带电机同步电机	DBG 10RPM CW 2-SW 230VAC 50Hz 24cm		1
12	232109010001		Gear motor rubber pad	同步电机橡胶垫片	Silicon Rubber		1
11	232209010001		Rotisserie rubber coupling	同步电机连接套	Silicon Rubber		1
10	342401006		Switch panel Ass'y	AJ31V开关板组合	GPMS,Flat,black powder coated		1
09	2102010021		Switch 0/I	翘板开关	Fuerj TUV FEJK-2K T100 16A 250VAC		1
08	2102010022		Switch 1	翘板开关	Fuerj TUV FEJK-2K T100 16A 250VAC		1
07	2102010023		Switch 11	翘板开关	Fuerj TUV FEJK-2K T100 16A 250VAC		1
06	450130002		Rotisserie	M1131反光镜			1
05	23190901108		Rotisserie rubber grommet	反光镜ø8护线圈	Rubber		1
04	21151010503		Magnet	磁钢	10x10mm		1
03	330501138		Log set bracket	AJ31V喇叭大支架	GPMS,Flat,black powder coated		1
02	330901007		Control panel	AJ31V开关板护板	GPMS,Flat,black powder coated		1
01	270201115		Front glass	AJ31V薄玻	Glass, bronze, toughen		1

UNLESS OTHERWISE SPECIFIED ALL DIM. IN INCHES. DO NOT SCALE. FLAT IS FOR REFERENCE ONLY. TOLERANCES: .XXX ± .005 X ± .01 X HOLES: ± .01 FRACT. ANGLES THIS SYMBOL REPRESENTS A CONTROL DIMENSION. CONTROL DIMENSIONS ARE CONSIDERED TO BE A GOOD INDICATOR OF WHETHER A MANUFACTURING PROCESS IS IN CONTROL. THESE DIM. MUST HAVE A MIN. Cpk OF 1.33 FOR A SAMPLE OF 31 CONSECUTIVE PIECES.		MATERIAL FINISH WHERE USED DR BY SEAN 22/MAY/12 CHK'D MERLIN 24/MAY/11 SCALE NTS DATE		TITLE Mini Mozart High Gloss Black exploding drawing (AJ31V-M高光黑) 爆炸图 MINMOZBL SHEET 10F2 SIZE X		REV 00
--	--	--	--	---	--	-----------

5011139202512

NO.	REVISION	DATE	By
00	RELEASED FOR PRODUCTION	MAY 22/12	Sean



UNLESS OTHERWISE SPECIFIED ALL DIM. IN INCHES. DO NOT SCALE. FLAT IS FOR REFERENCE ONLY. TOLERANCES: .XXX ± .XX ± .X ± HOLES: ± FRACT. ± ANGLES ±		MATERIAL MATERIAL FINISH FINISH WHERE USED		TITLE Mini Mozart High Gloss Black wiring diagram (AJ31V-M4488 电路连接图)		REV 00		
<div><div></div></div> THIS SYMBOL REPRESENTS A CONTROL DIMENSION. CONTROL DIMENSIONS ARE CONSIDERED TO BE A GOOD INDICATOR OF WHETHER A MANUFACTURING PROCESS IS IN CONTROL. THESE DIM. MUST HAVE A MIN Cpk OF 1.33 FOR A SAMPLE OF 31 CONSECUTIVE PIECES.		DR BY SEAN		22/MAY/12		MINMOZBL	SHEET 20F2	SIZE X
		CHK'D MERLIN		24/MAY/12				
		SCALE NTS		DATE				
				This drawing, and the design of the article represented herein, are the exclusive property of Glen Dimplex and are provided strictly on a confidential basis. The drawing and design shall be used only for the purposes for which they have been provided and shall not be produced, reproduced, altered, used, published or disclosed to others without the prior written consent of Glen Dimplex.		5011139202512		