

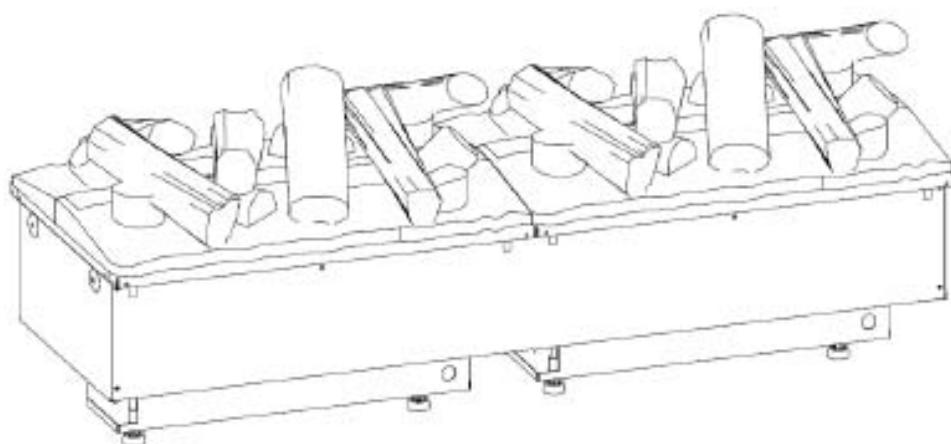


Optimyst CAS500, CAS1000

Instruction Flowcharts



CAS500



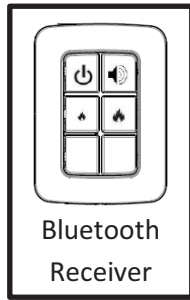
CAS1000

Contents

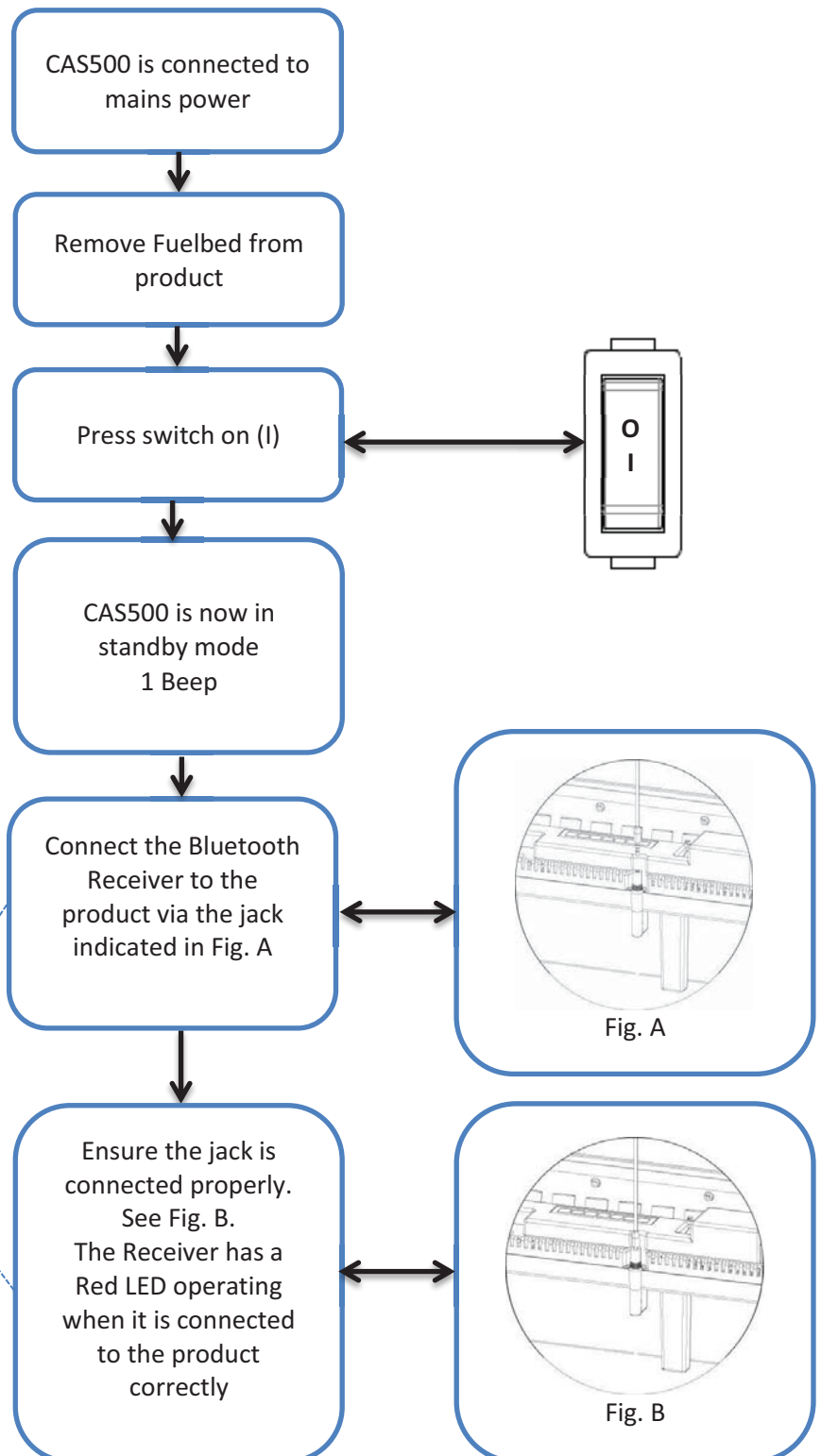
CAS500 – STARTUP	2
CONNECT BLUETOOTH RECEIVER.....	2
CONNECT REMOTE CONTROL	4
CAS500 – RECONNECTING REMOTE CONTROL	5
CAS500 – OPERATION	7
CAS500 – FLAME ADJUSTMENT	8
CAS500 – SOUND ADJUSTMENT.....	9
CAS500 – LOW WATER	10
CAS500 – OVERFLOW DETECTION.....	11
CAS500 – TEST MODE.....	12
CAS500 – REMOVING FUELBED	17
CAS1000 – CONTROLS IDENTIFICATION	18
CAS1000 – STARTUP	19
CONNECT BLUETOOTH RECEIVER.....	19
CONNECT REMOTE CONTROL	21
CAS1000 – RECONNECTING REMOTE CONTROL	22
CAS1000 - OPERATION	24
CAS1000 – FLAME ADJUSTMENT	25
CAS1000 – SOUND ADJUSTMENT.....	26
CAS1000 – LOW WATER	27
CAS1000 – OVERFLOW DETECTION.....	28
CAS1000 – TEST MODE.....	29
MASTER SIDE	29
CAS1000 – TEST MODE.....	34
SLAVE SIDE.....	34
CAS1000 – REMOVING FUELBEDS	39

CAS500 – STARTUP

CONNECT BLUETOOTH RECEIVER

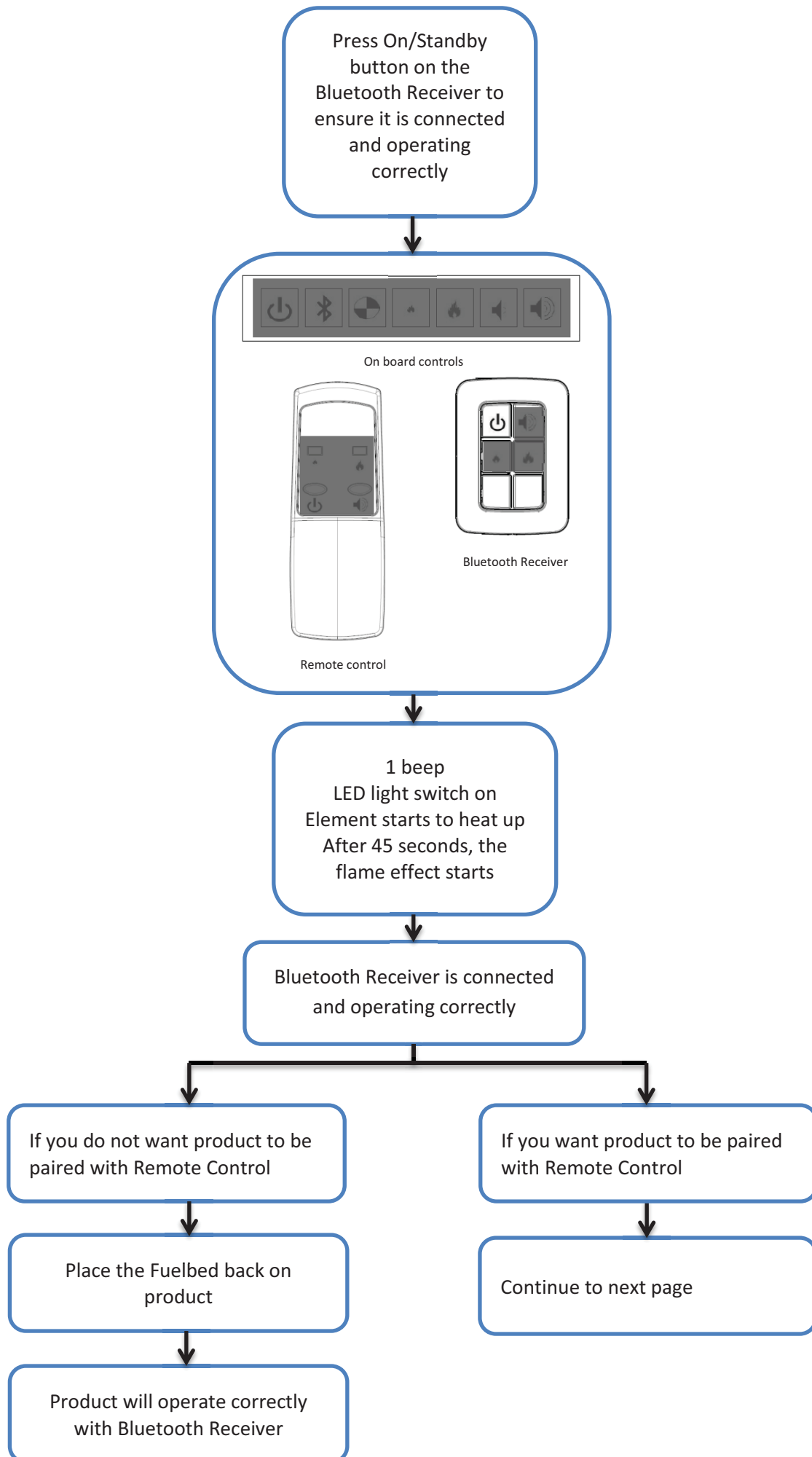


IMPORTANT:
Product **will not**
function correctly
without Bluetooth
Receiver connected



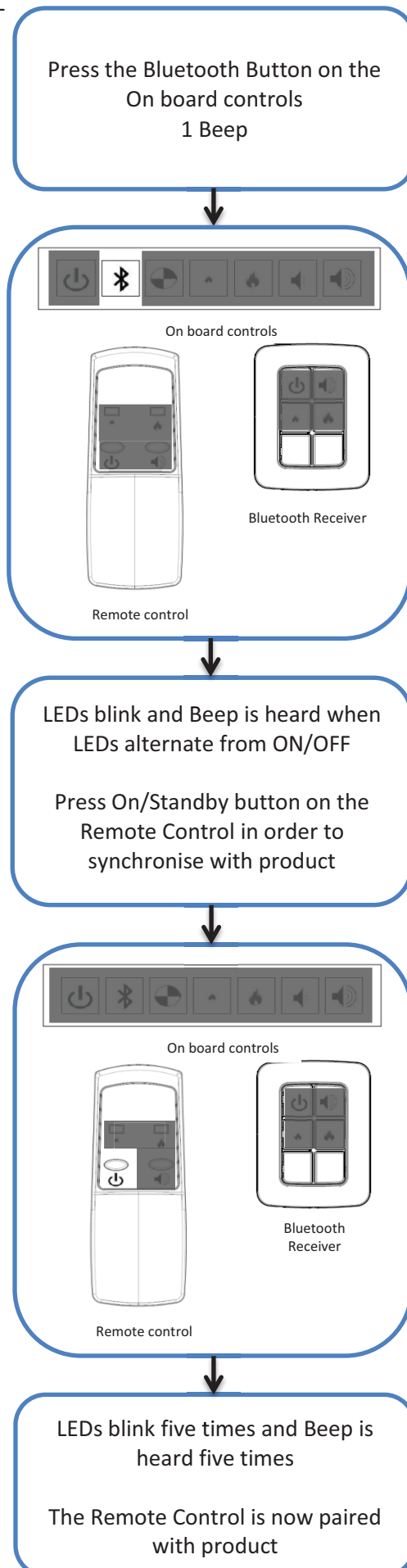
CAS500 – STARTUP ... continued

CONNECT BLUETOOTH RECEIVER



CAS500 – STARTUP ... continued

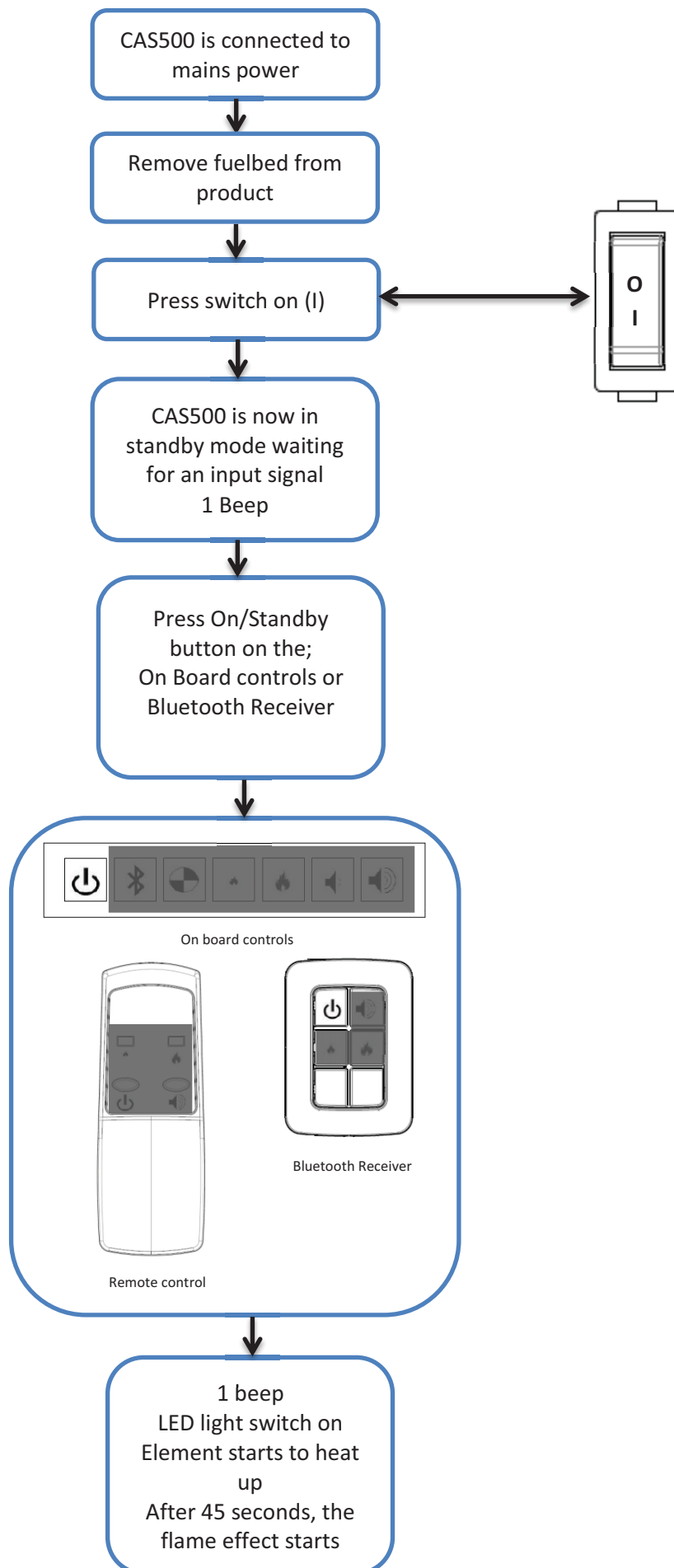
CONNECT REMOTE CONTROL



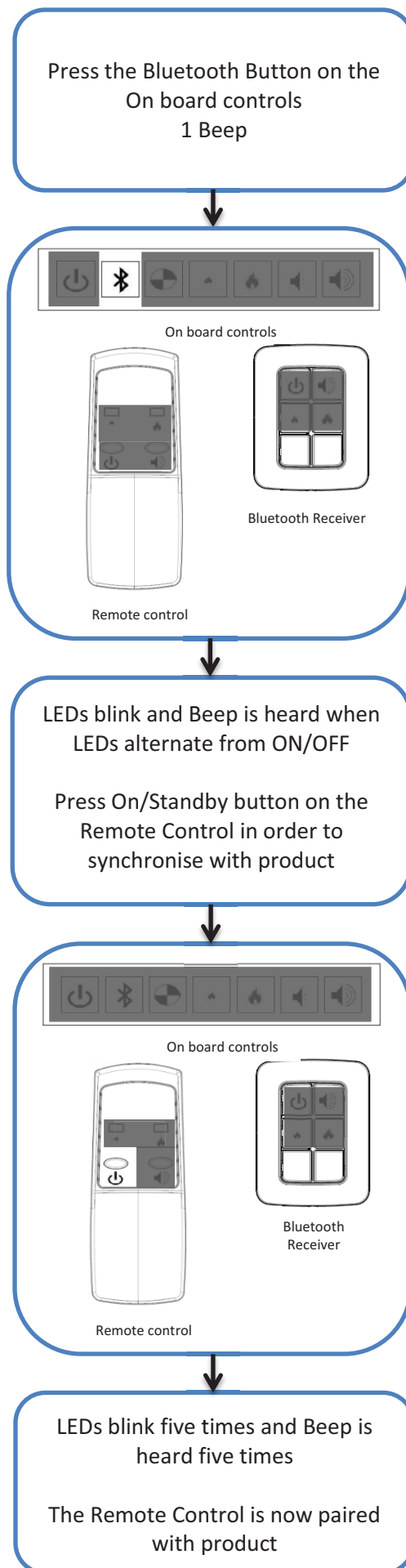
CAS500 – RECONNECTING REMOTE CONTROL

IMPORTANT:

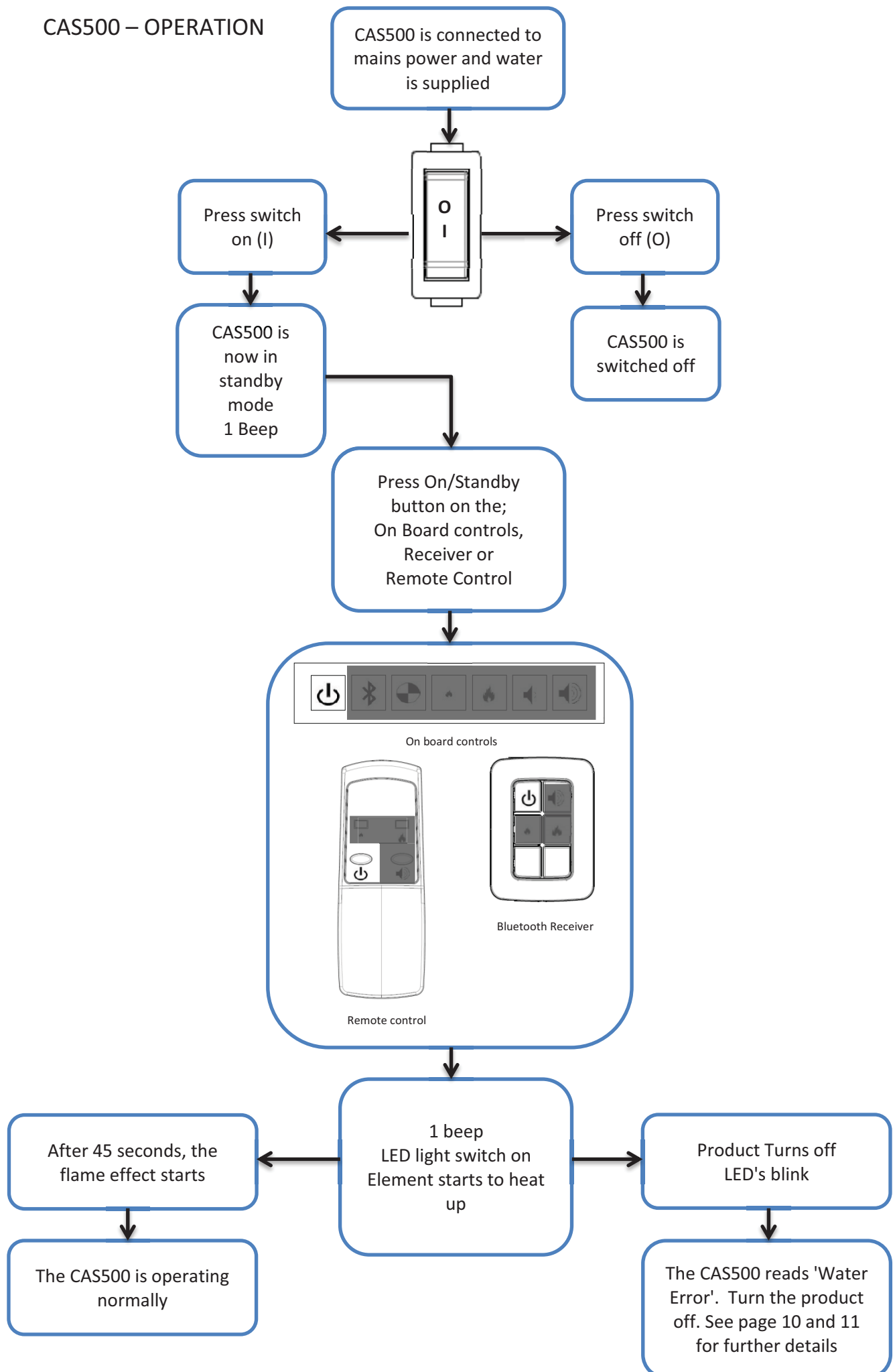
Bluetooth Receiver must be connected correctly before pairing the remote control. See pages 2 and 3.



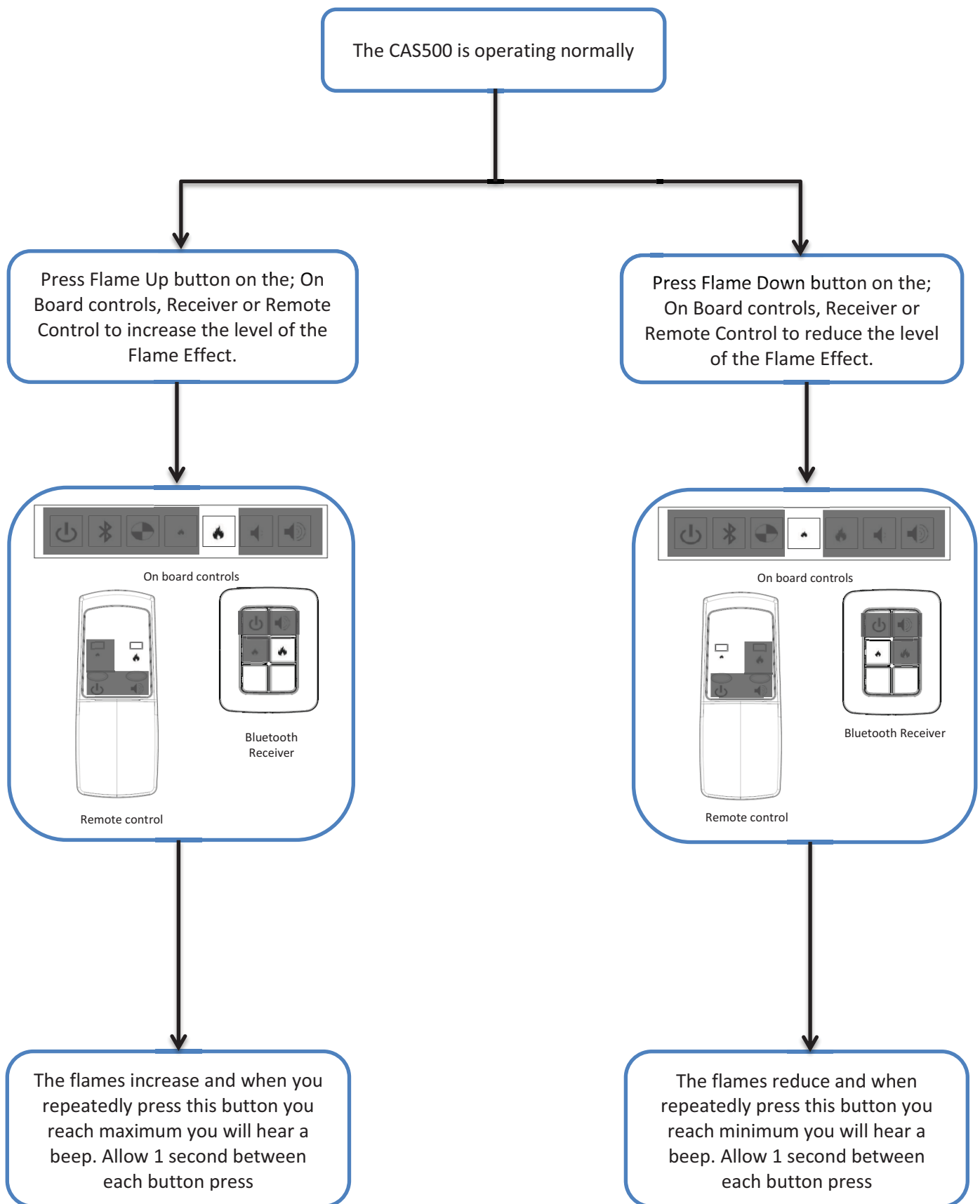
CAS500 – RECONNECTING REMOTE CONTROL ... continued



CAS500 – OPERATION



CAS500 – FLAME ADJUSTMENT



CAS500 – SOUND ADJUSTMENT

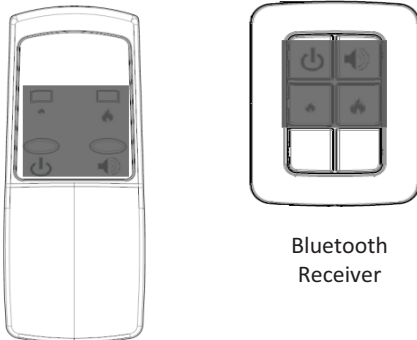
The CAS500 is operating normally

Press Sound Down button on the; On Board controls only to reduce the fire sound

Press Sound Up button on the; On Board controls only to increase the fire sound



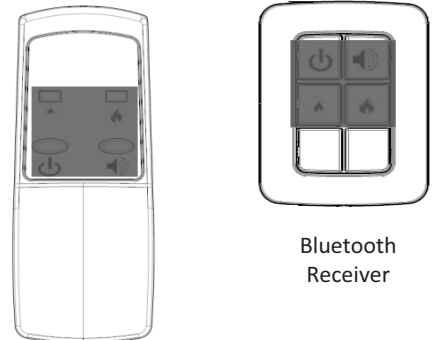
On board controls



Remote control



On board controls



Remote control

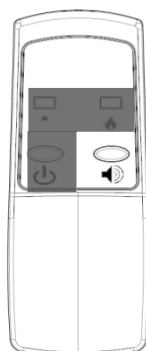
The sound reduces and when you repeatedly press this button the sound will reduce until you cannot hear it any more. Allow 1 second between each button press

The sound increase and when you repeatedly press this button you reach maximum you will hear a beep. Allow 1 second between each button press

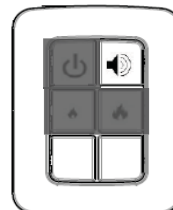
Press Sound button on the Receiver or Remote to turn on and off the fire sound



On board controls

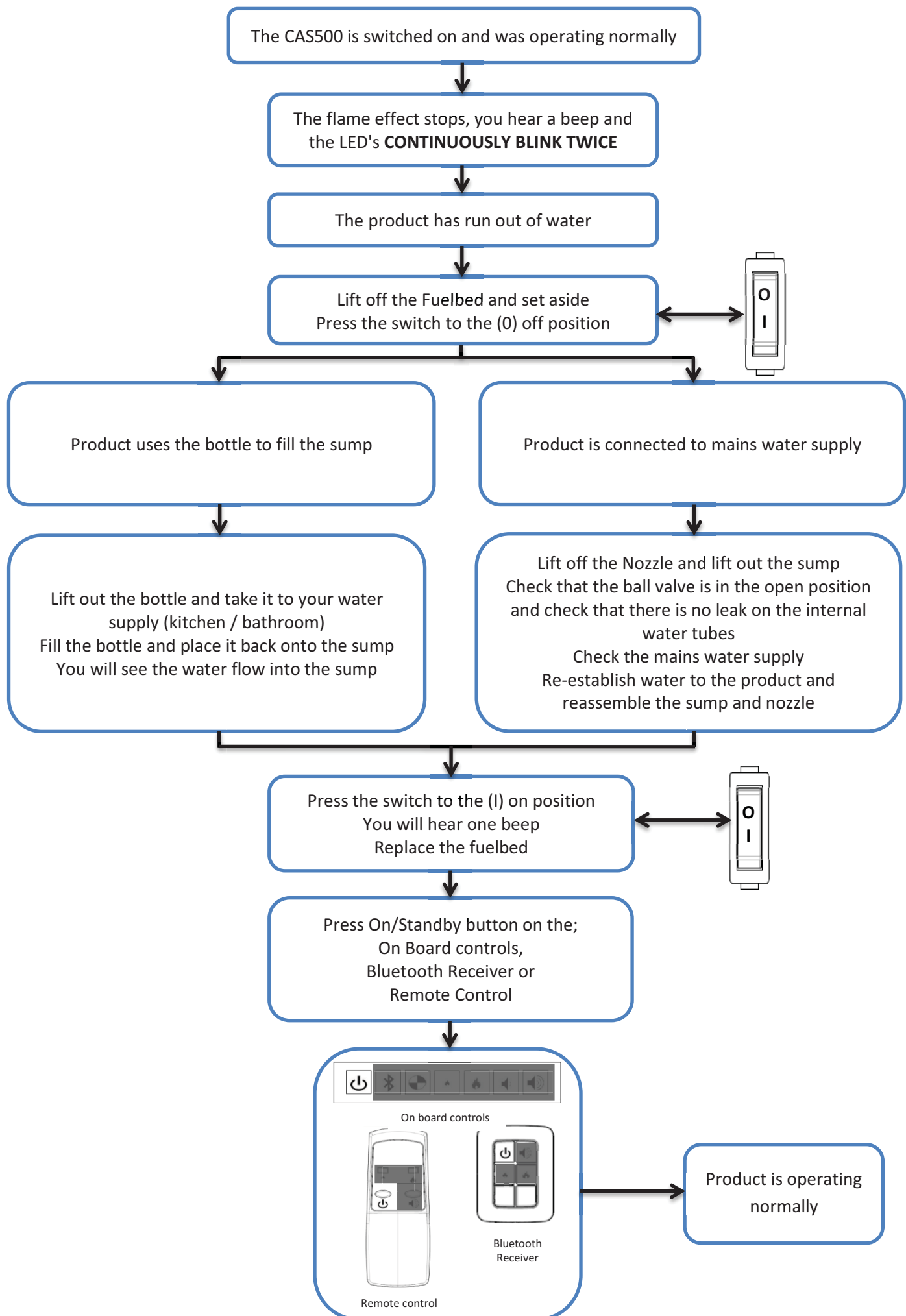


Remote control

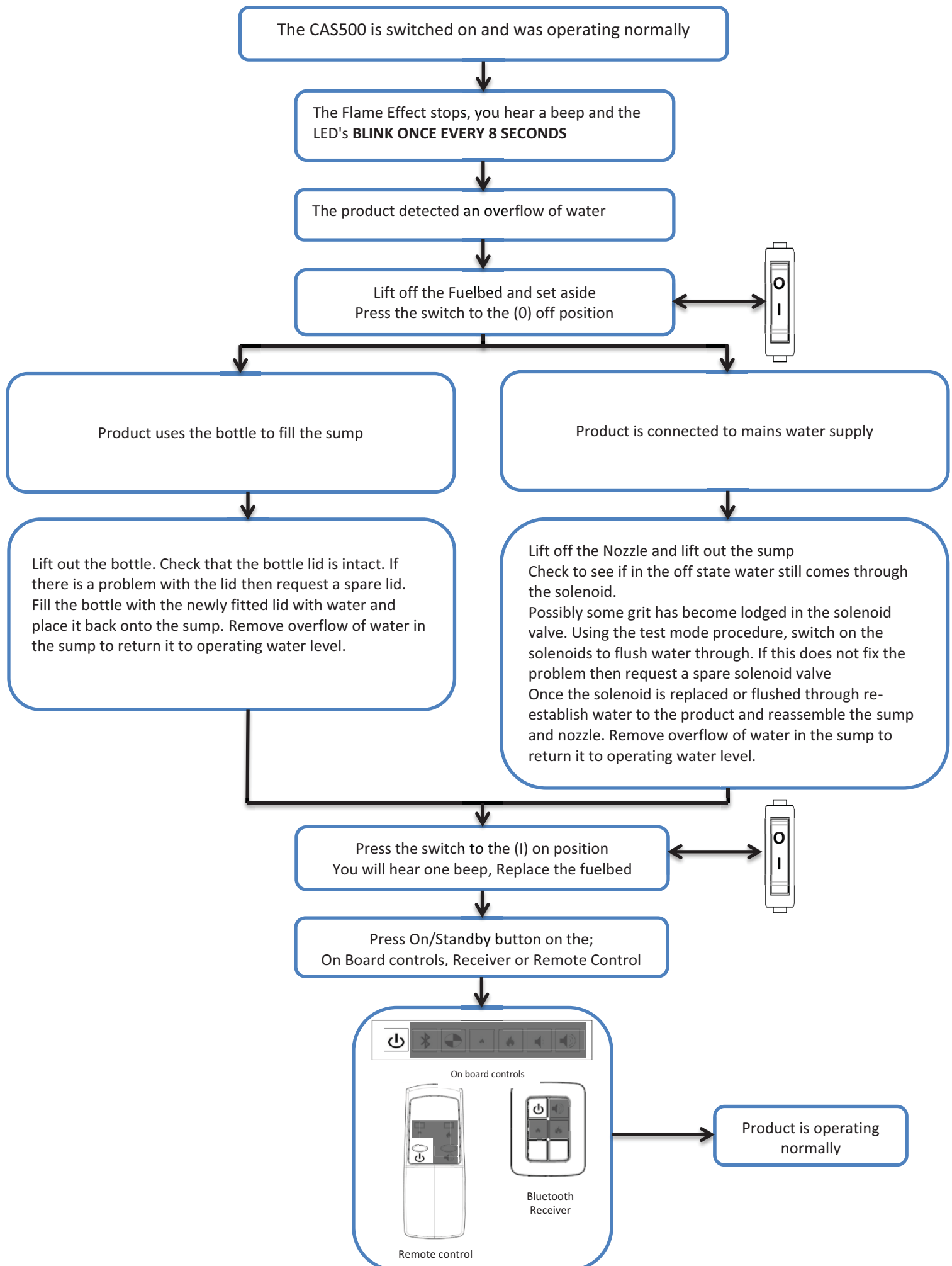


Bluetooth Receiver

CAS500 – LOW WATER



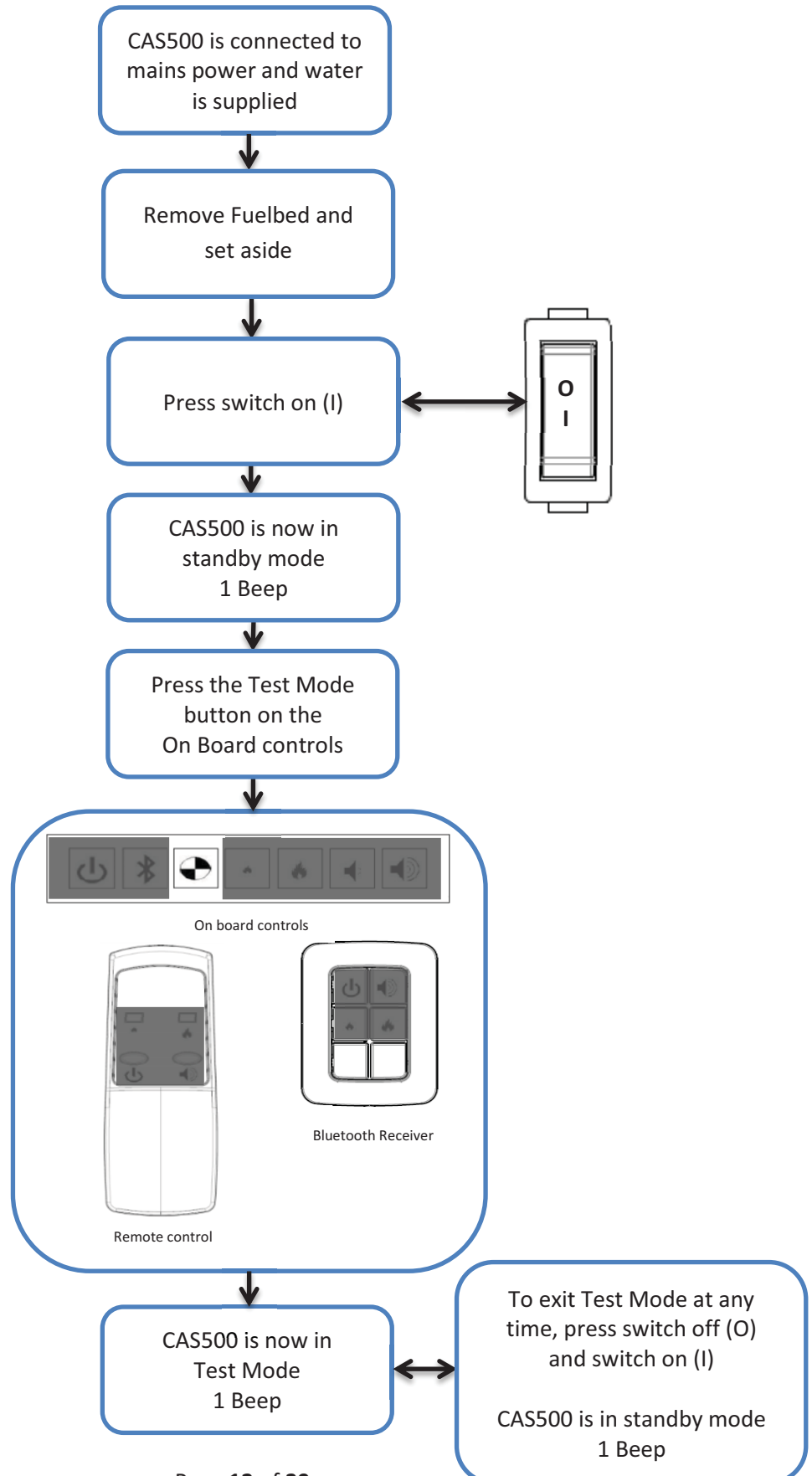
CAS500 – OVERFLOW DETECTION



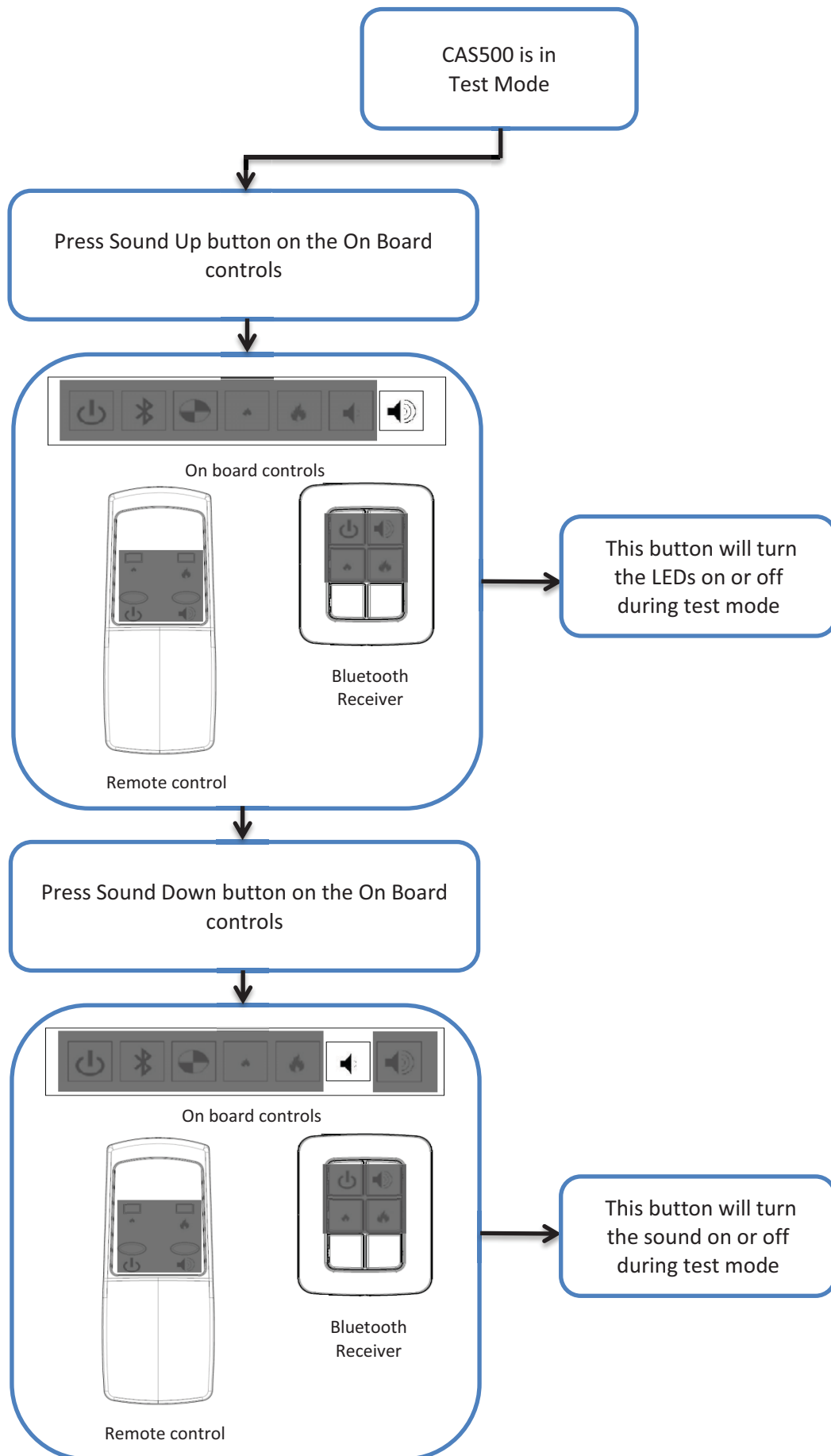
CAS500 – TEST MODE

IMPORTANT:

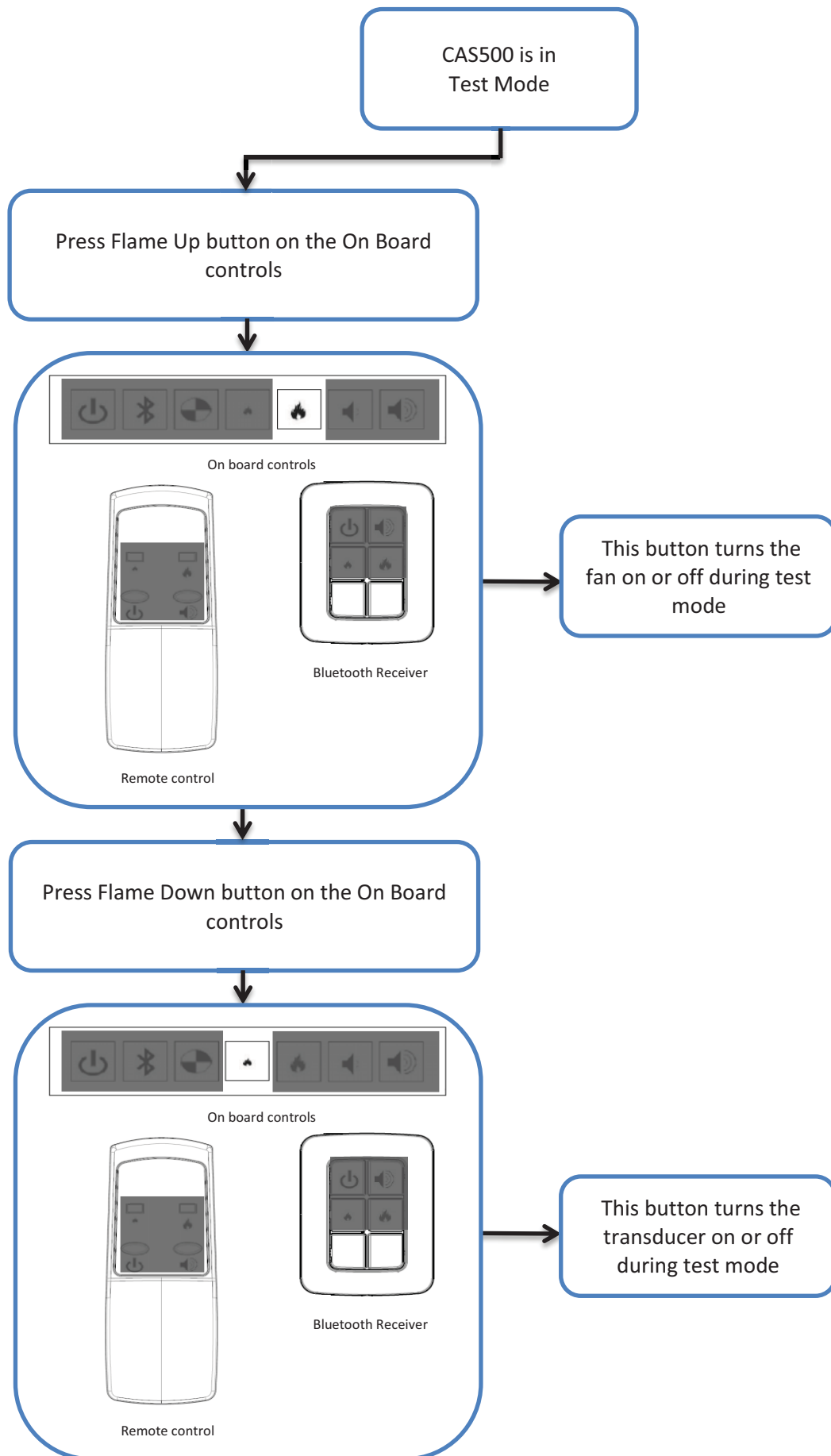
Test Mode has been integrated into this product to improve end-of-line testing during production and can be used by service Engineers to isolate components for individual function testing. Test mode should be conducted by trained personnel only. The icons on the On Board Control buttons do not match the commands they are associated with, when in test mode.



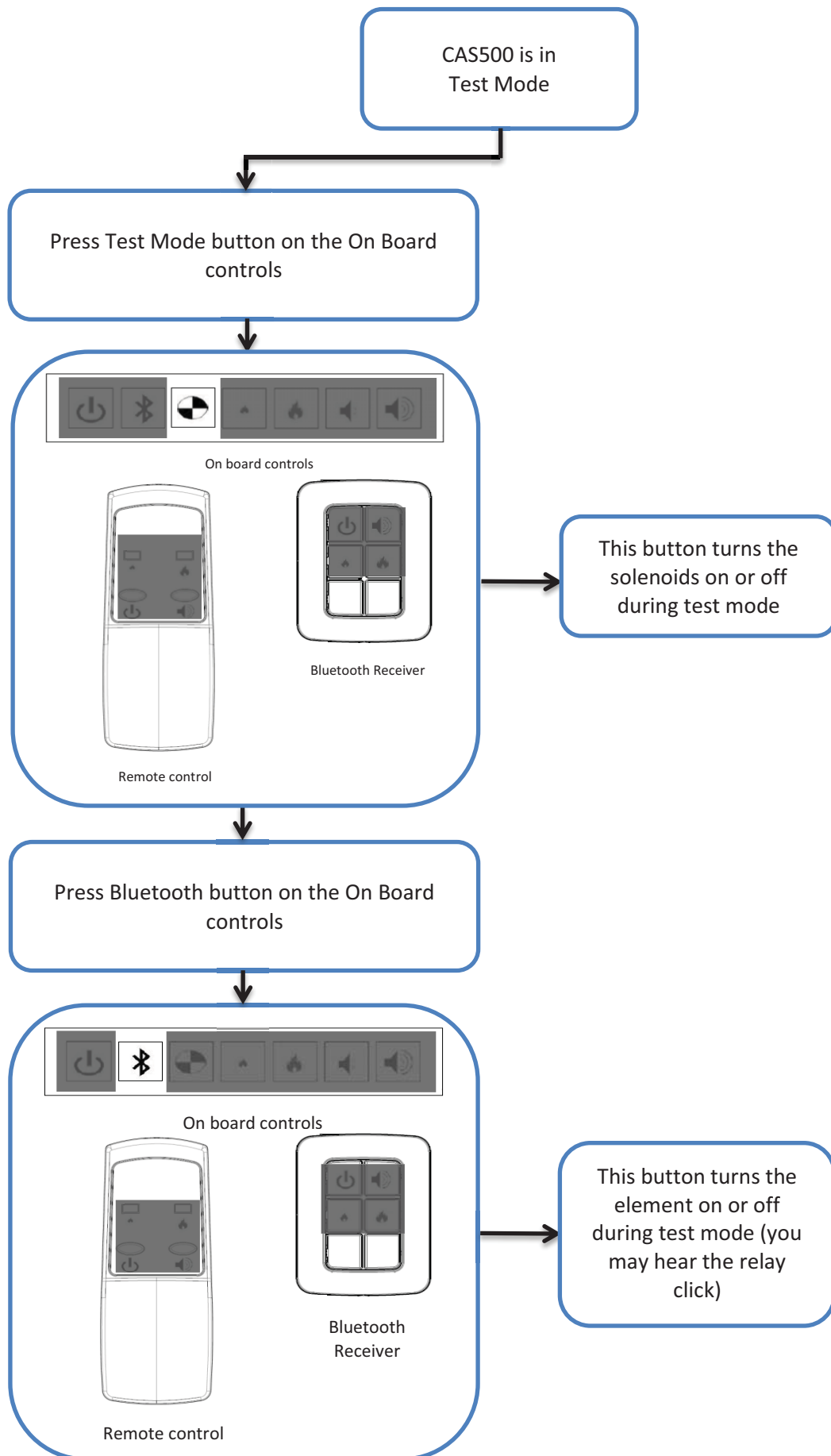
CAS500 – TEST MODE ... continued



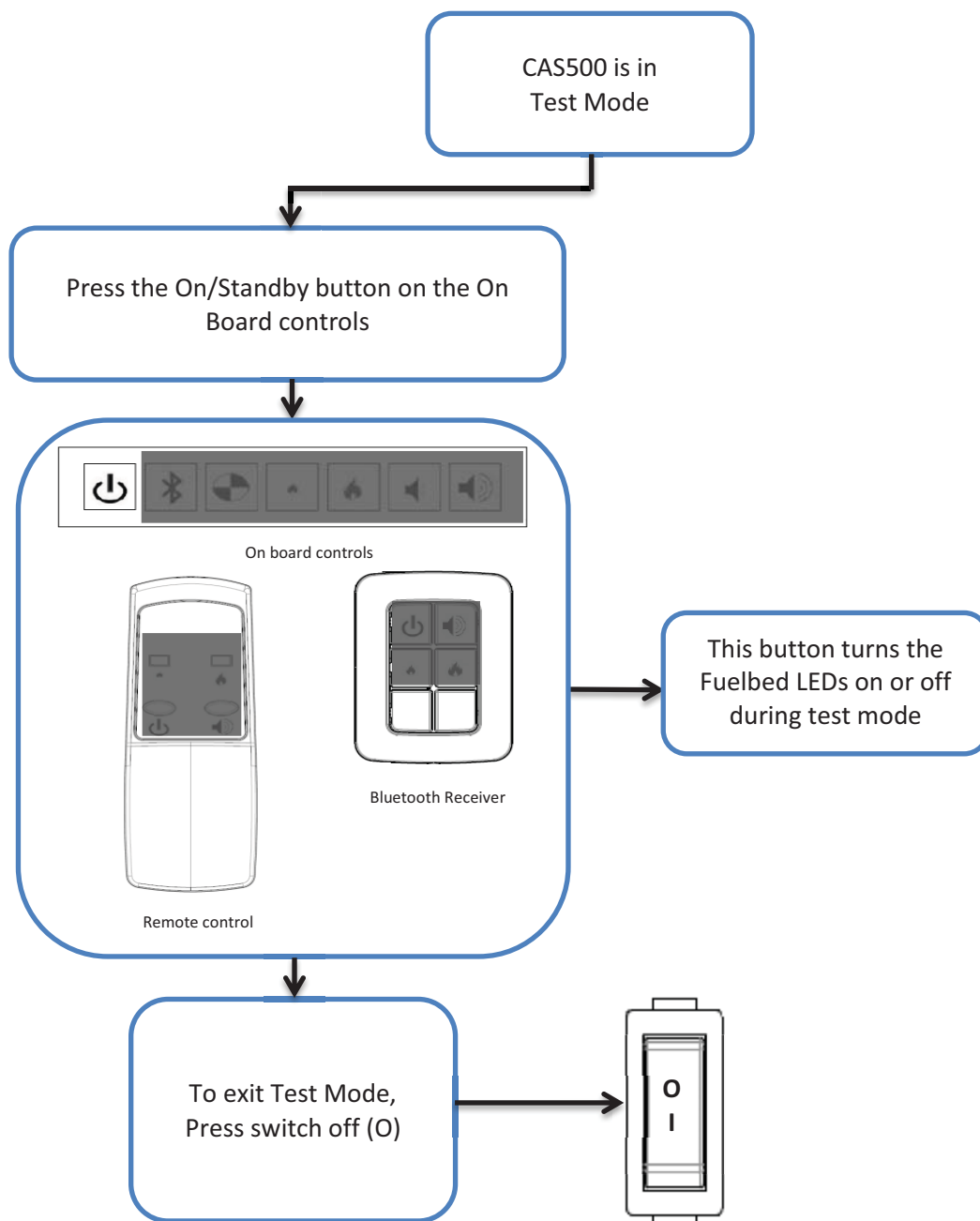
CAS500 – TEST MODE ... continued



CAS500 – TEST MODE ... continued

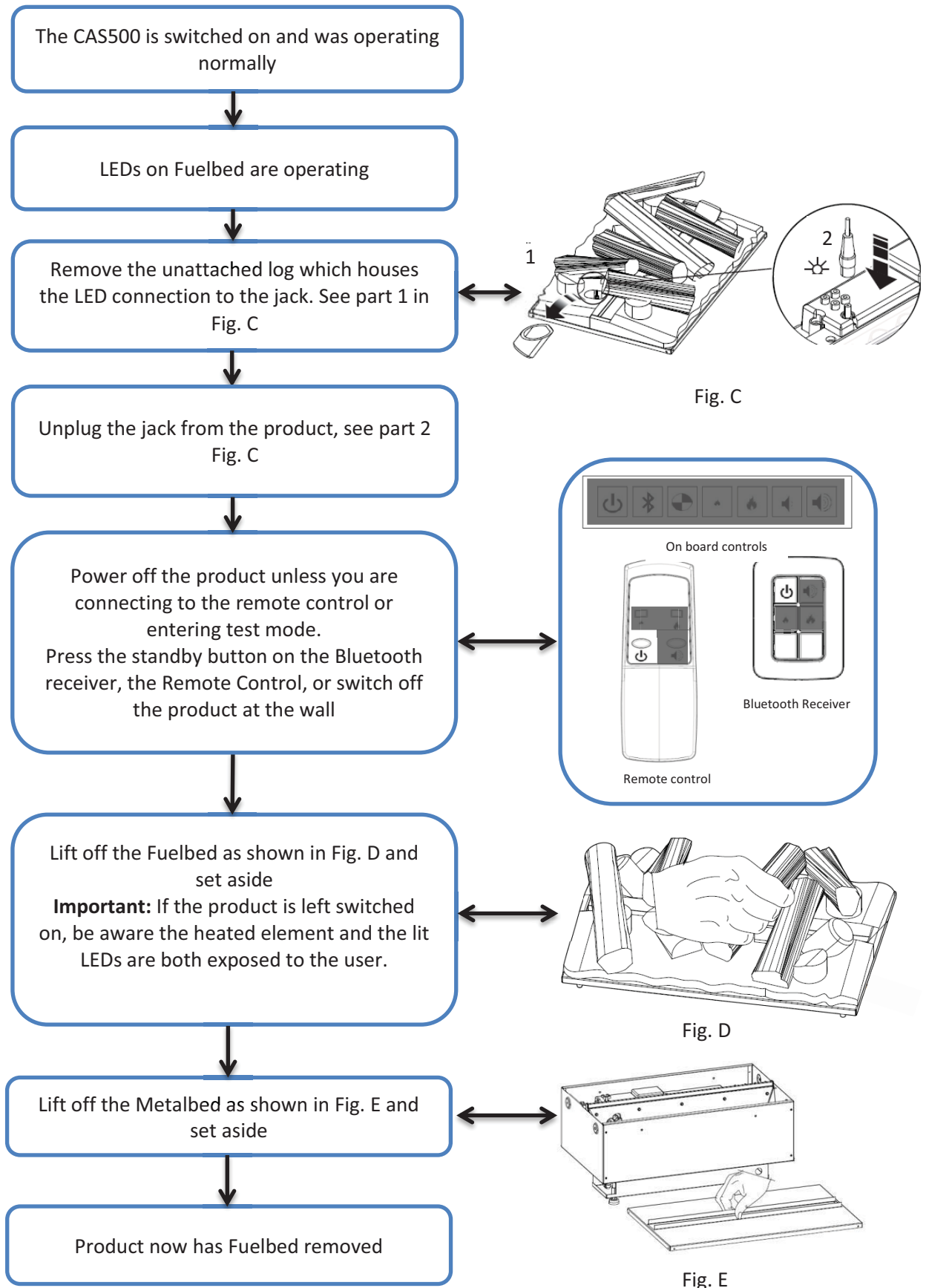


CAS500 – TEST MODE ... continued



Note: When in Test Mode, the CAS500 will revert to standby mode if there are no buttons pressed after a period of 16 seconds. Any parts that may have been switched on during testing will also switch off.

CAS500 – REMOVING FUELBED



CAS1000 – CONTROLS IDENTIFICATION

The CAS1000 has two sides;

- Master Side: which commands the overall operation of the product
- Slave Side: which follows the operation commands from the Master side
- Both sides have independent Flame Effect and Sound controls

CAS1000 ON BOARD CONTROLS

- The Bluetooth Receiver is connected to the Master side via a jack. See page 19 and 20.
- The On Board Controls are different for either side.
 - The Master side has the seven buttons as seen in CAS500 product.
 - The Slave side also has seven buttons; however, the first two buttons contain no icons, and these should only be during test mode by trained personnel. For more details, see from page 29.



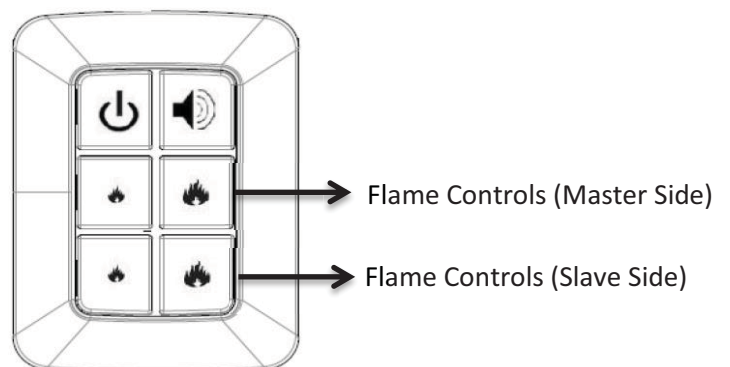
On board controls (Master Side)



On board controls (Slave Side)

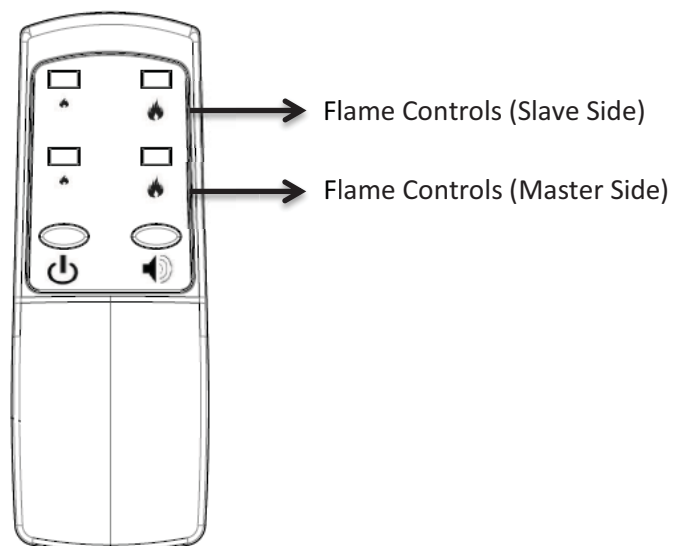
CAS1000 BLUETOOTH RECEIVER

The CAS1000 bluetooth receiver contains six buttons, in contrast to the four button receiver used in the CAS500. The additional two buttons control the flame effect on the slave side of the product. See pages 19 and 20 for more details.



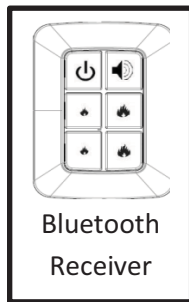
CAS1000 REMOTE CONTROL

The CAS1000 Remote Control also contains six buttons. Similar to the CAS1000 Bluetooth Receiver, the additional two buttons control the flame effect on the slave side of the product. See pages 22 and 23 for more details.

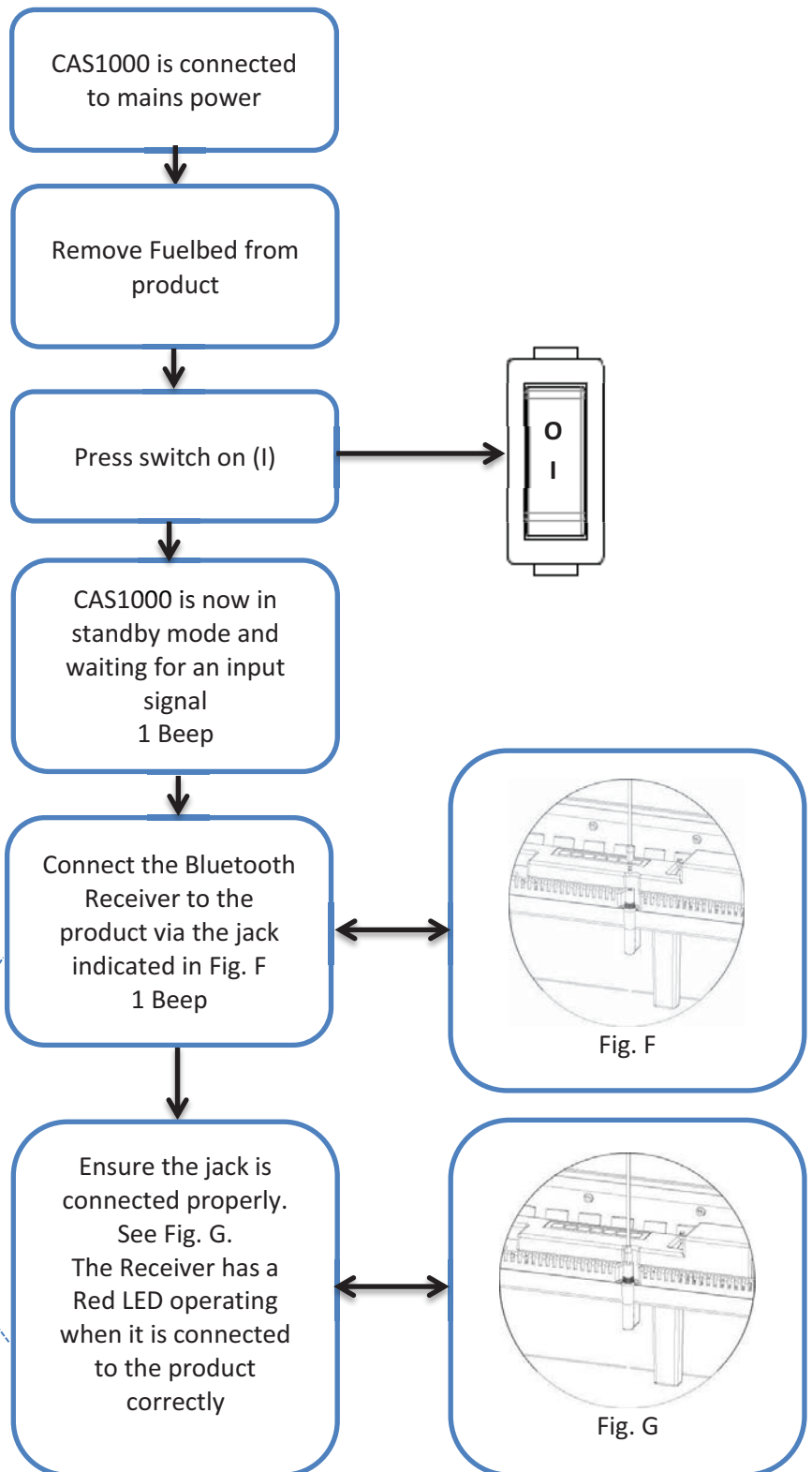


CAS1000 – STARTUP

CONNECT BLUETOOTH RECEIVER

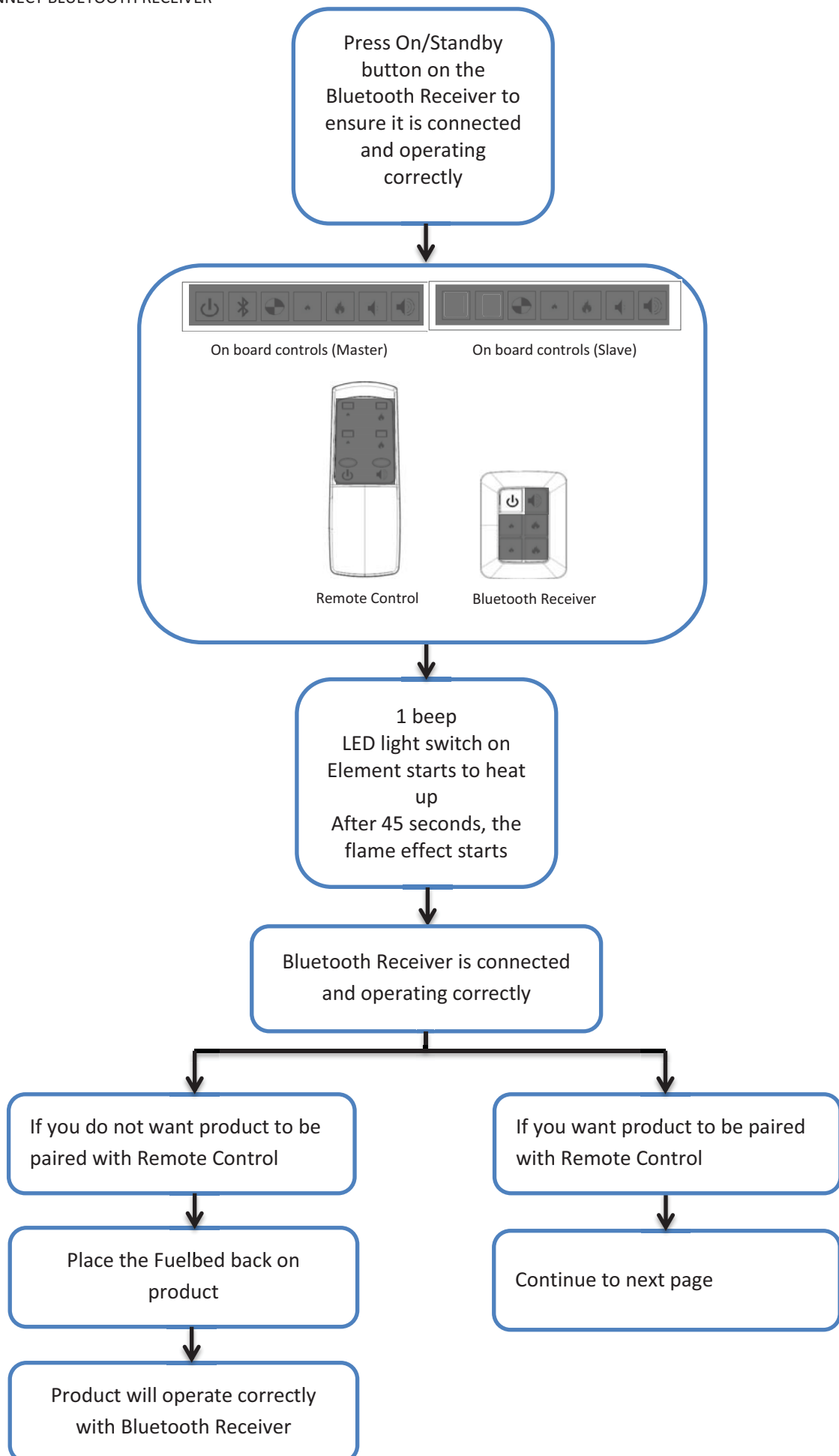


IMPORTANT:
Product **will not**
function correctly
without Bluetooth
Receiver connected



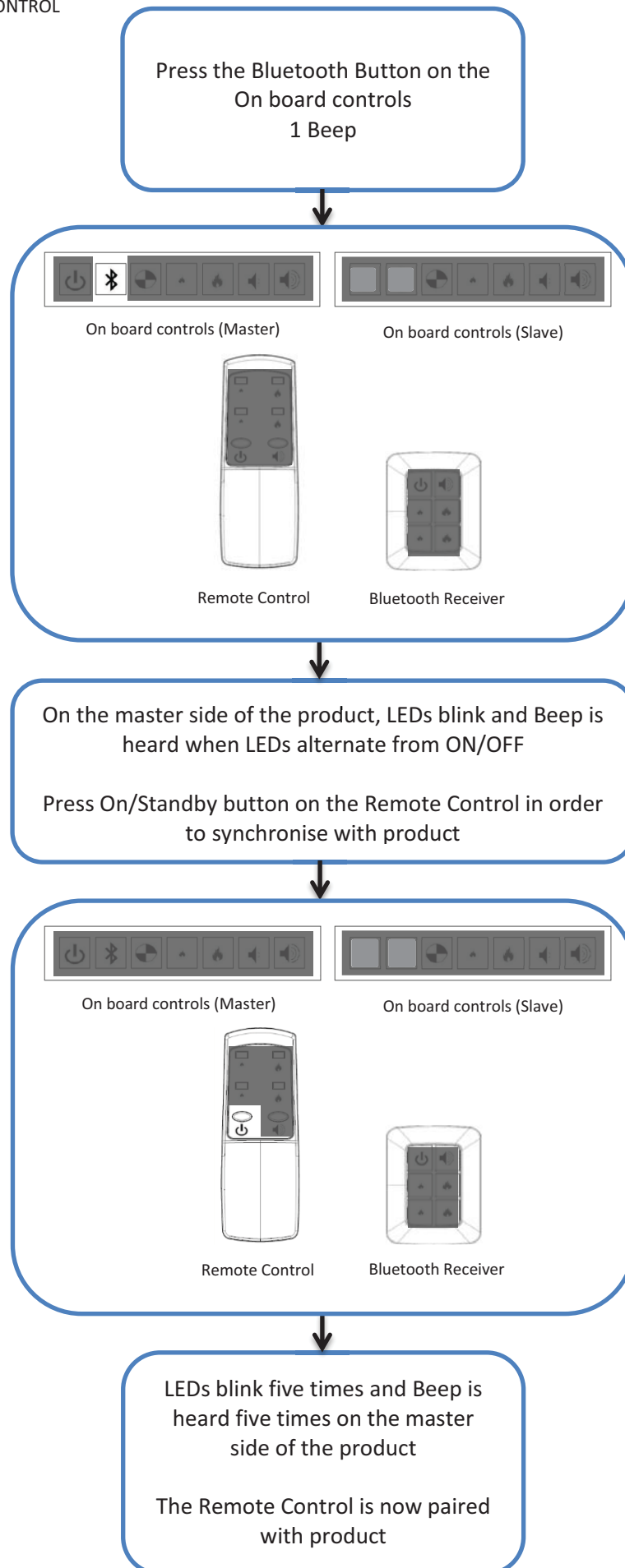
CAS1000 – STARTUP ... continued

CONNECT BLUETOOTH RECEIVER



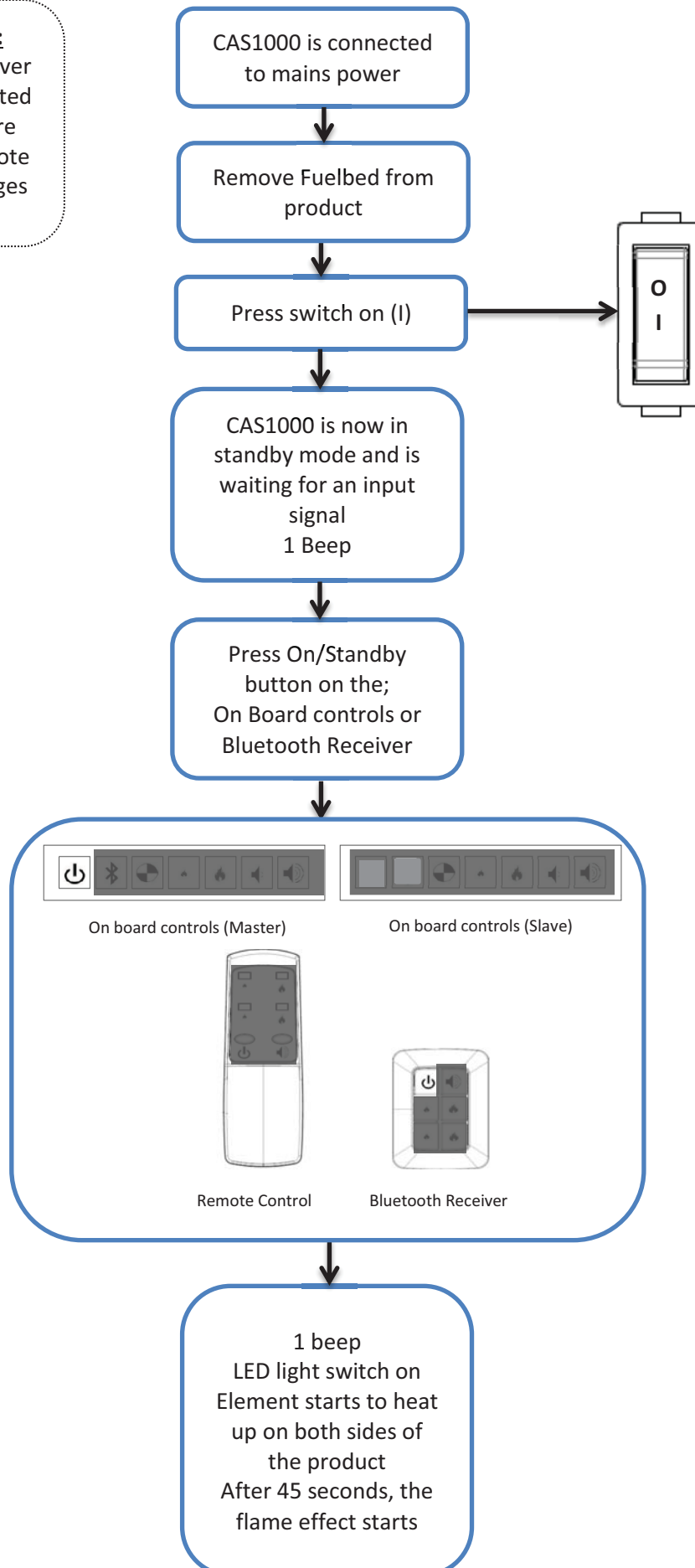
CAS1000 – STARTUP ... continued

CONNECT REMOTE CONTROL

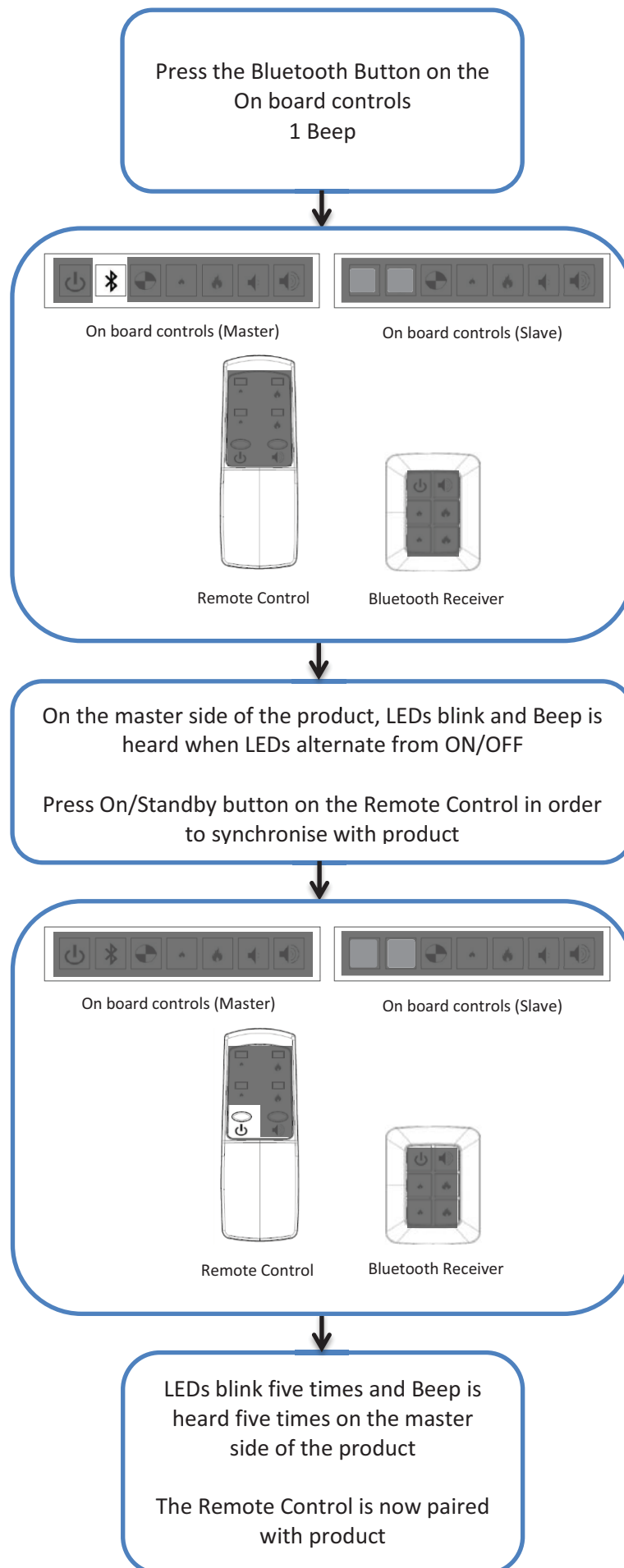


CAS1000 – RECONNECTING REMOTE CONTROL

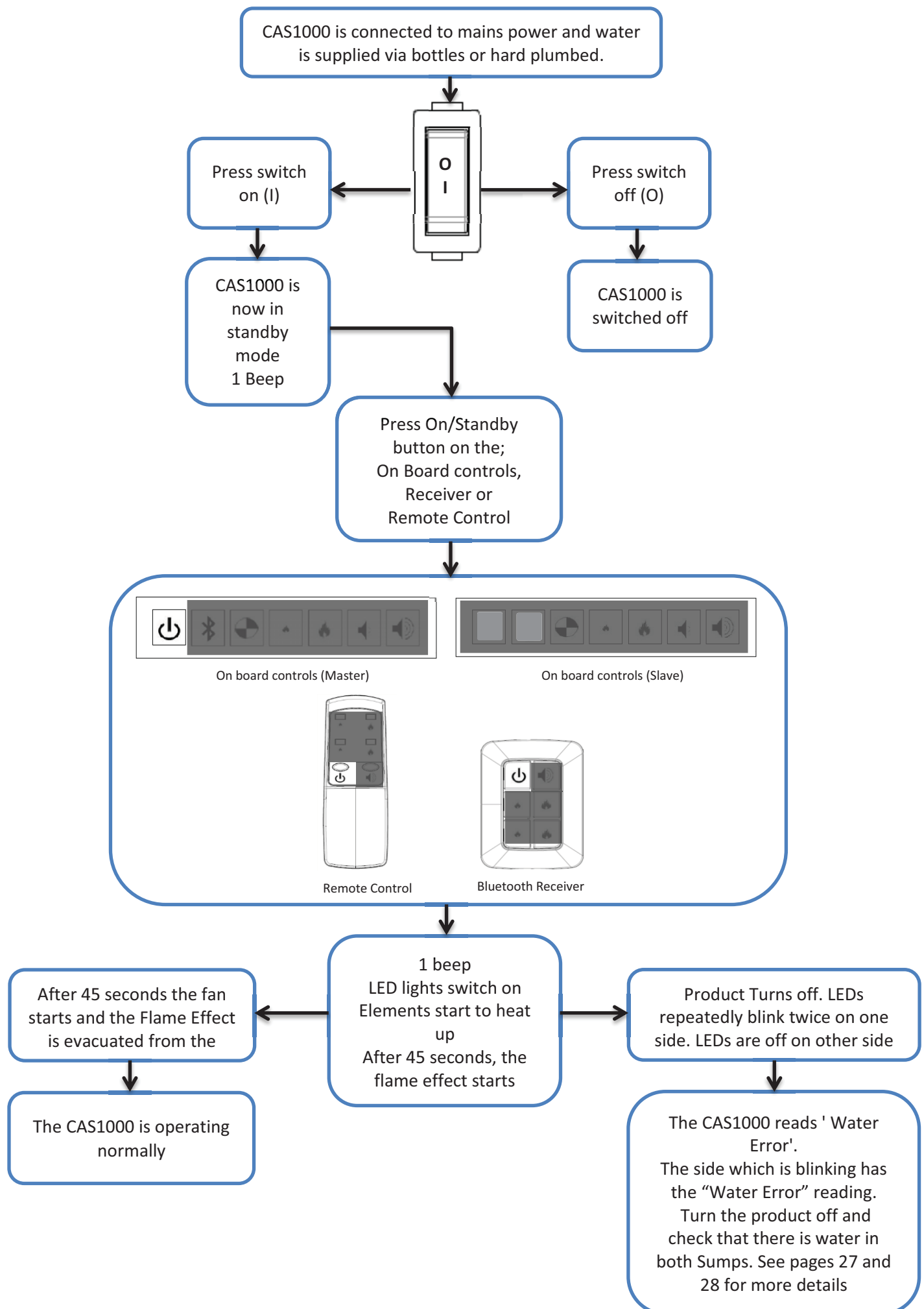
IMPORTANT:
Bluetooth Receiver
must be connected
correctly before
pairing the remote
control. See pages
19 and 20.



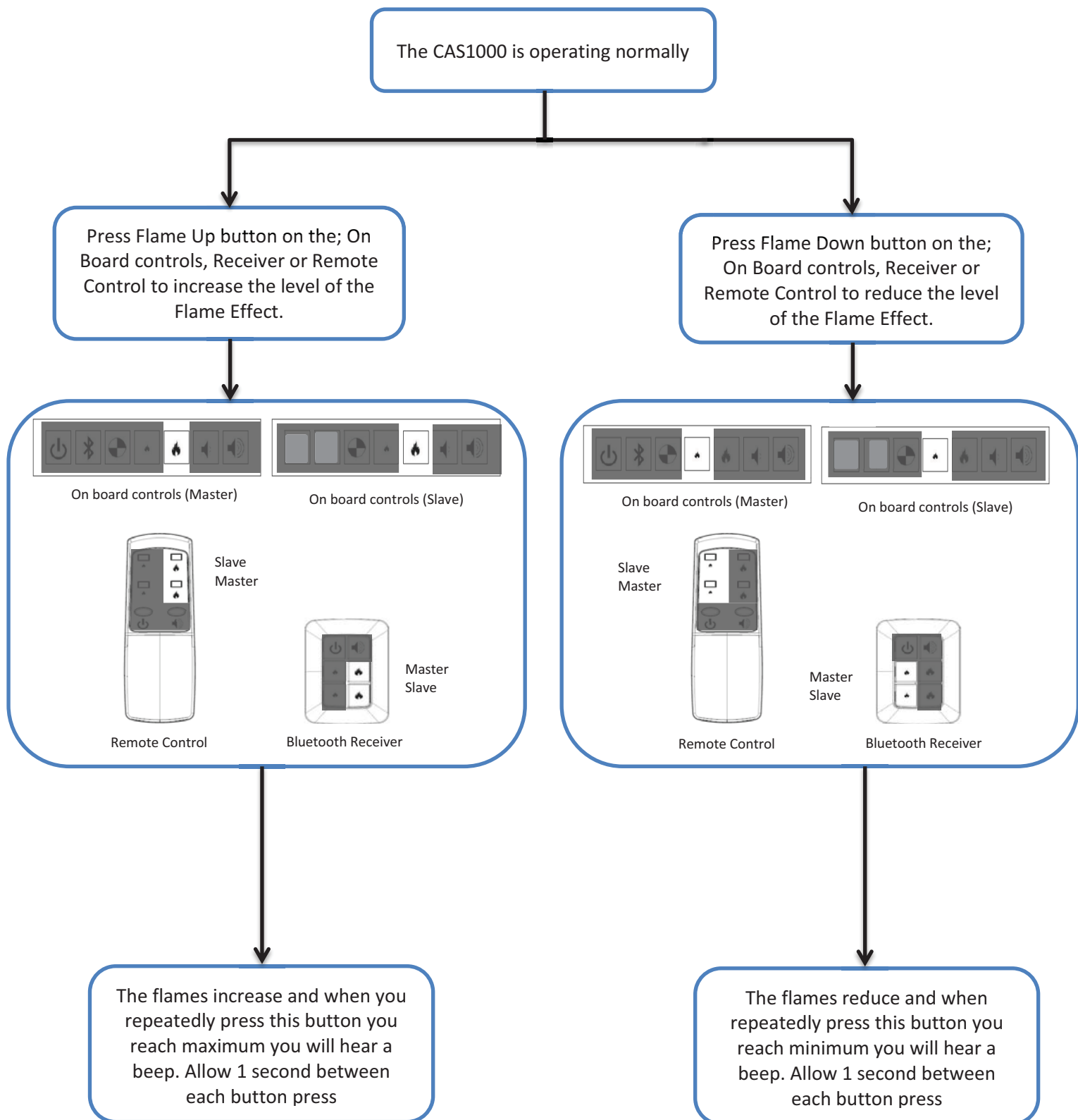
CAS1000 – RECONNECTING REMOTE CONTROL ... continued



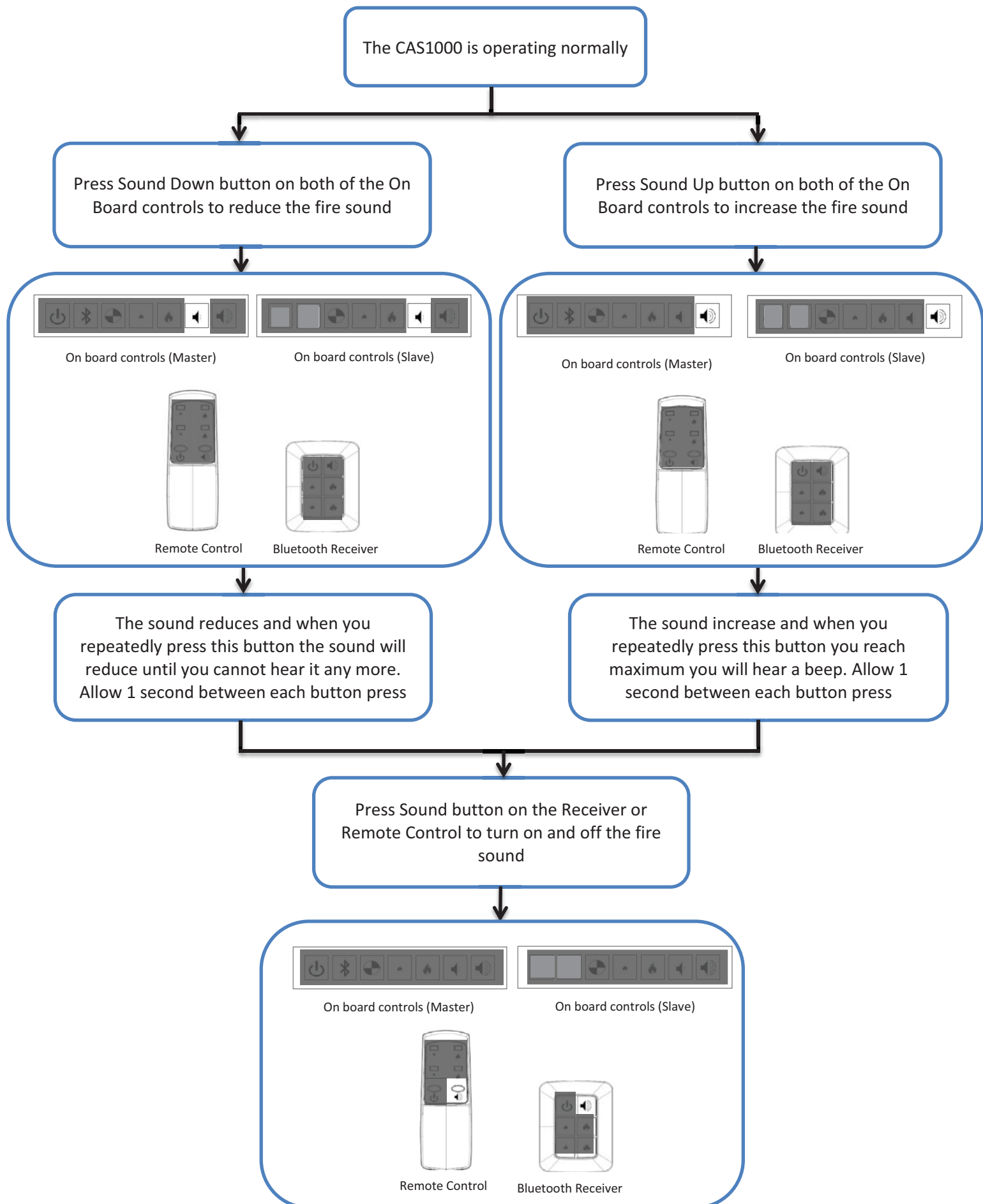
CAS1000 - OPERATION



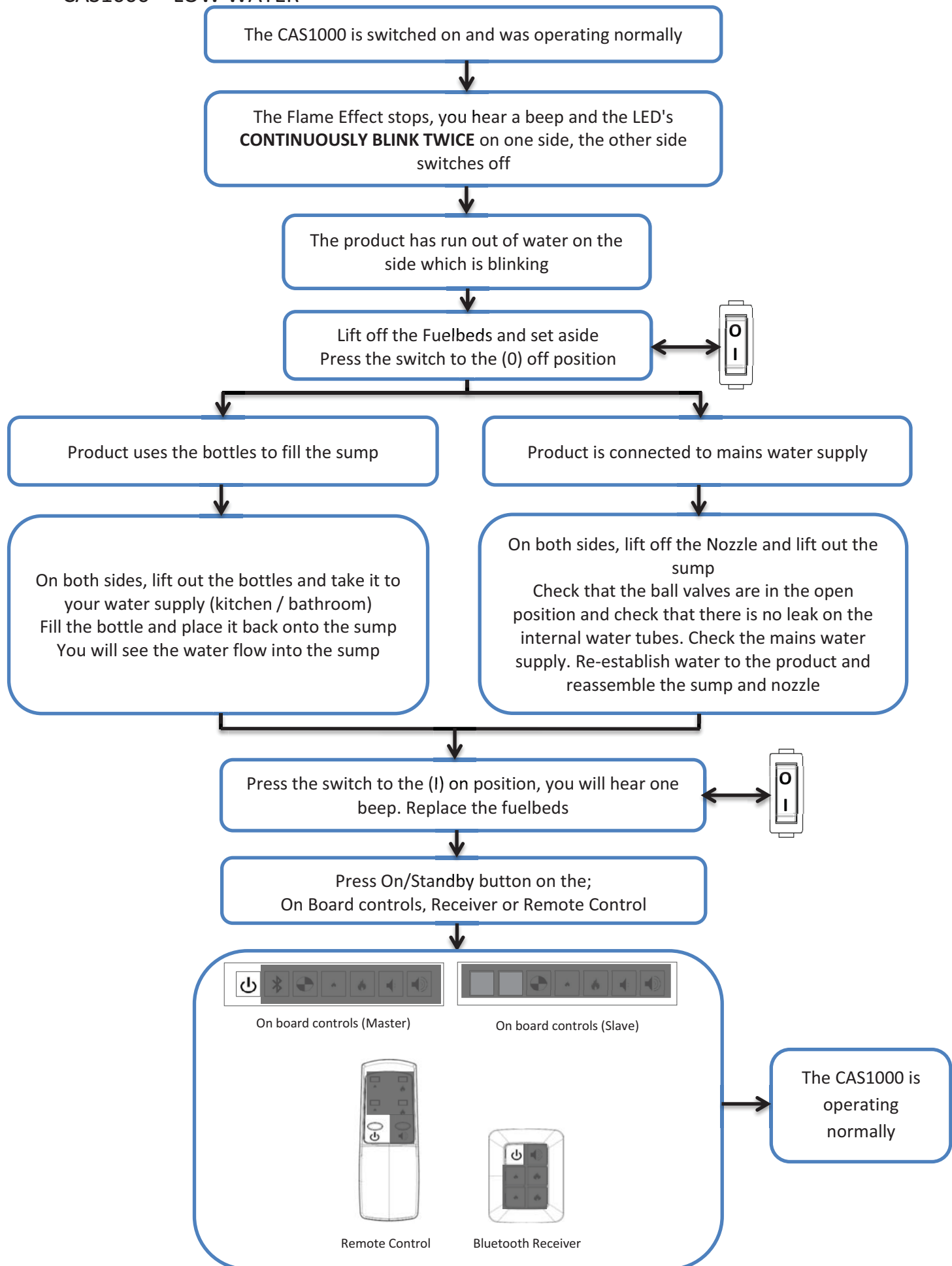
CAS1000 – FLAME ADJUSTMENT



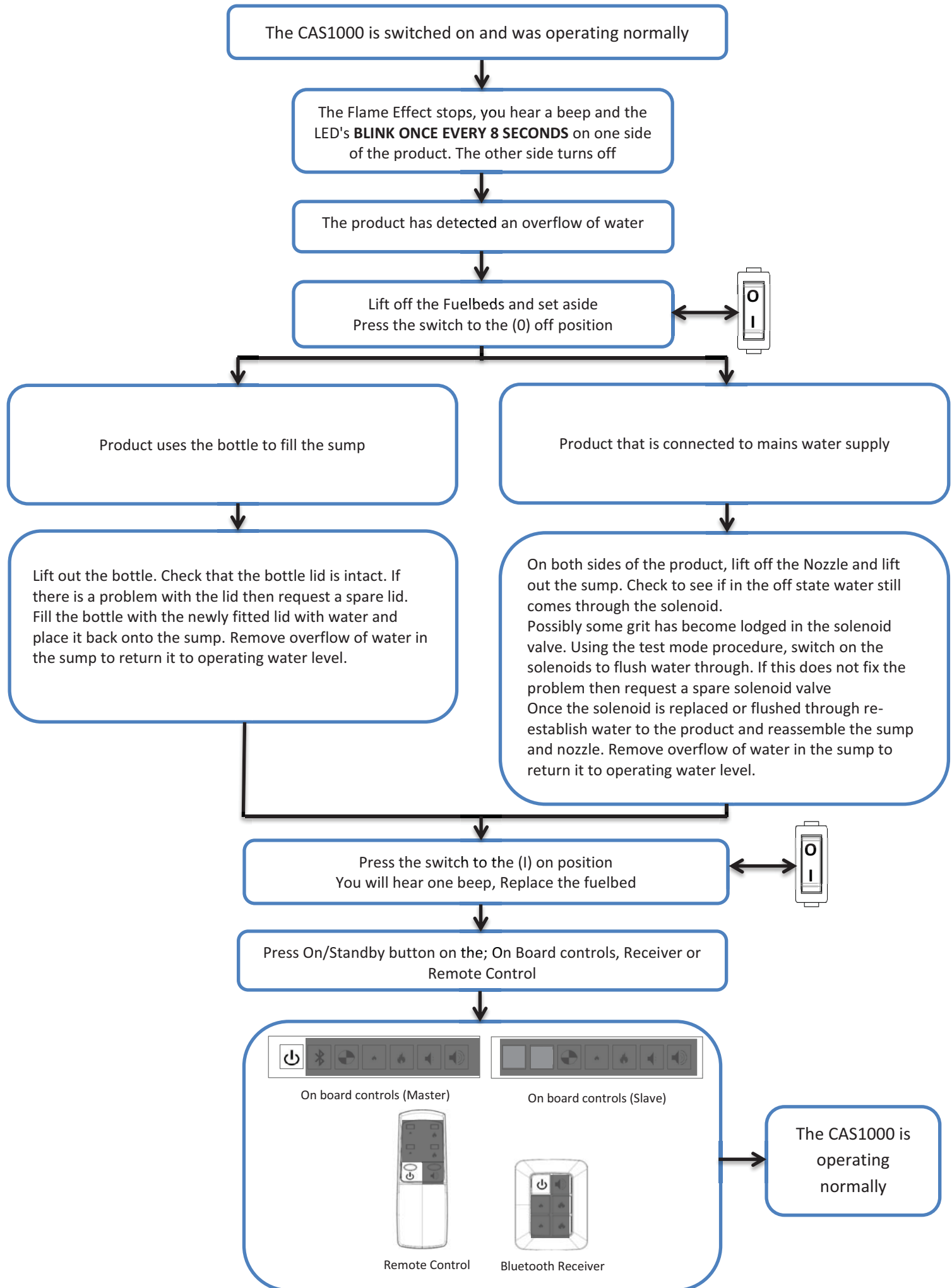
CAS1000 – SOUND ADJUSTMENT



CAS1000 – LOW WATER



CAS1000 – OVERFLOW DETECTION

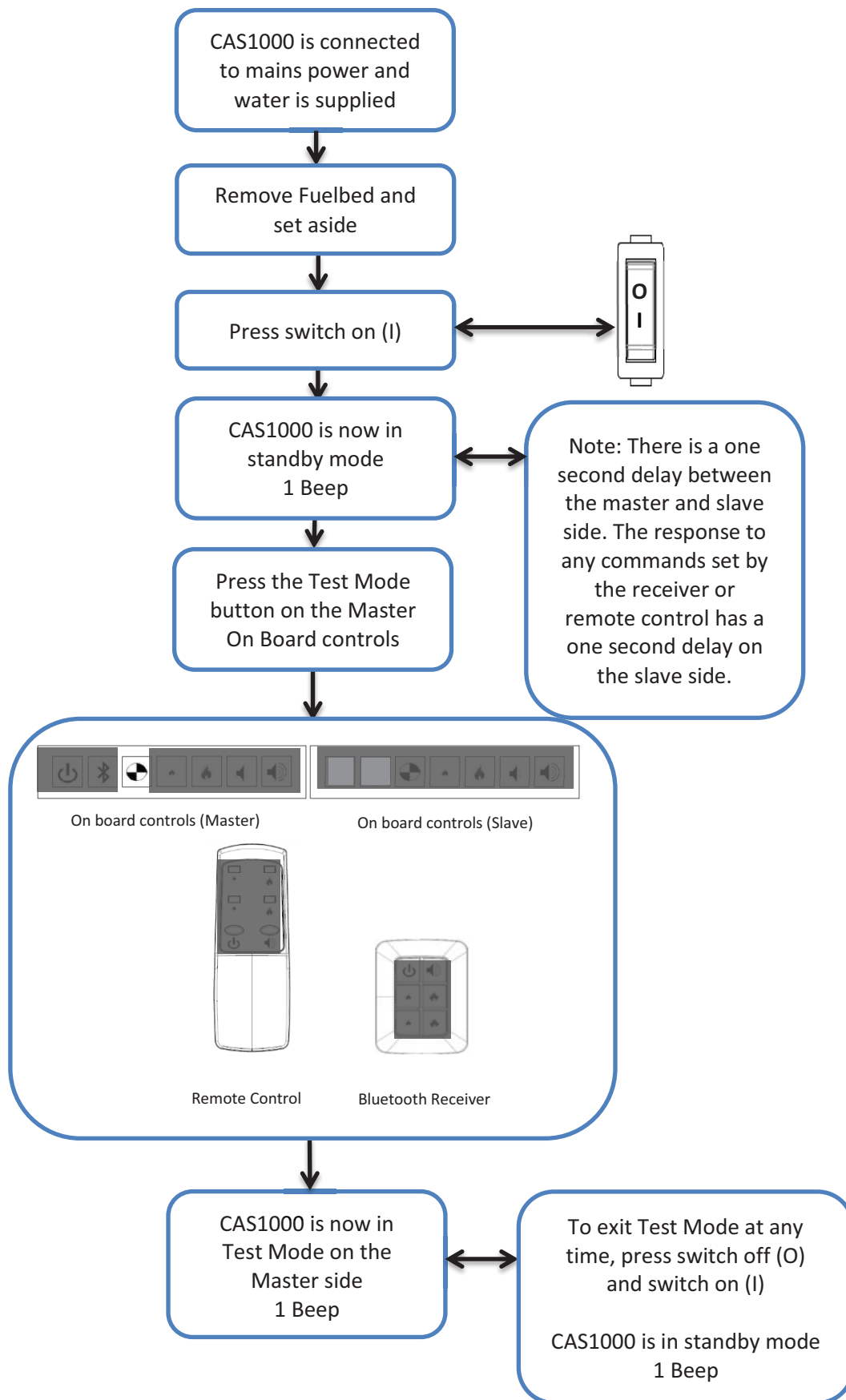


CAS1000 – TEST MODE

MASTER SIDE

IMPORTANT:

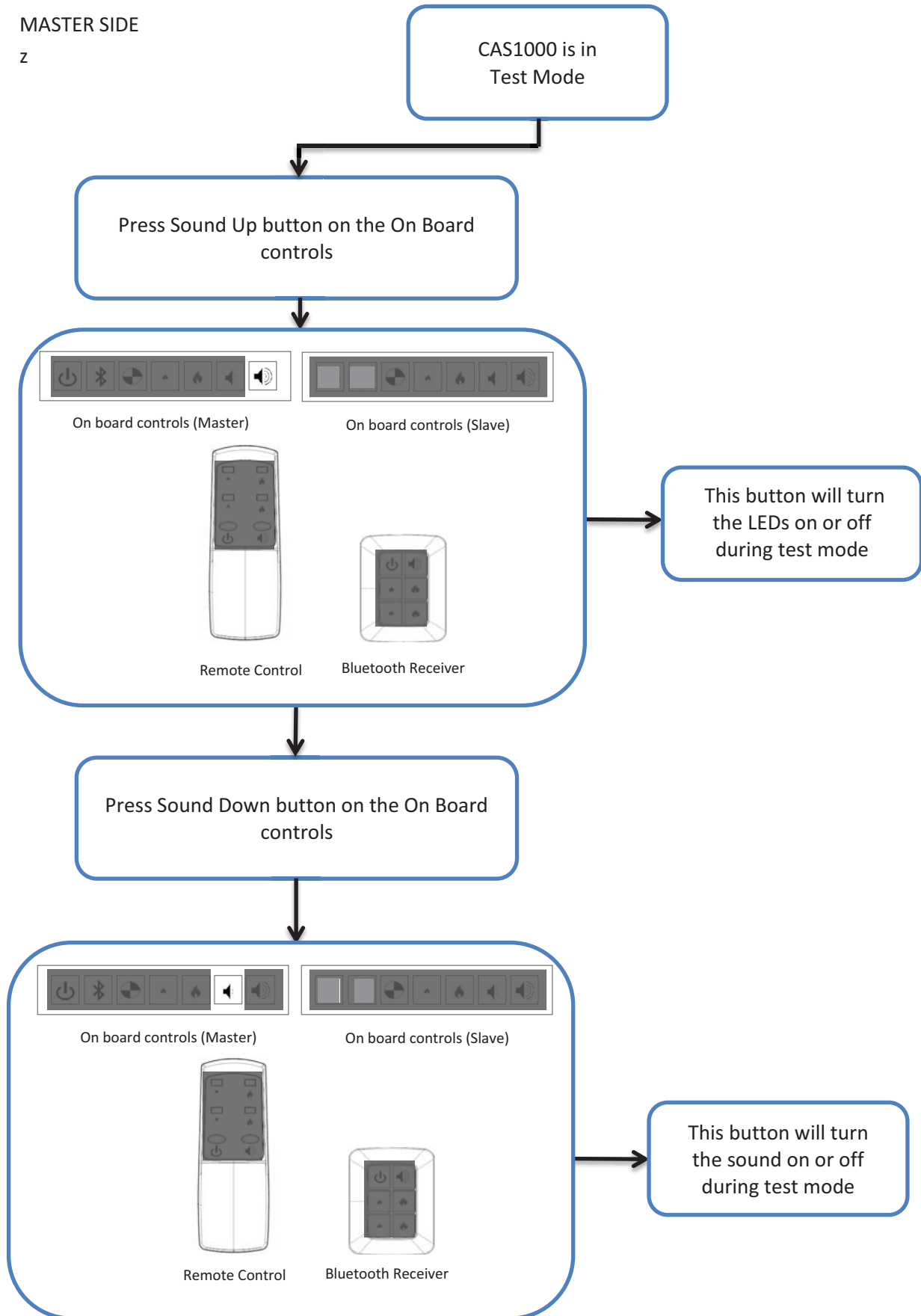
Test Mode has been integrated into this product to improve end-of-line testing during production and can be used by service Engineers to isolate components for individual function testing. Test mode should be conducted by trained personnel only. The icons on the On Board Control buttons do not match the commands they are associated with, when in test mode.



CAS1000 – TEST MODE ... continued

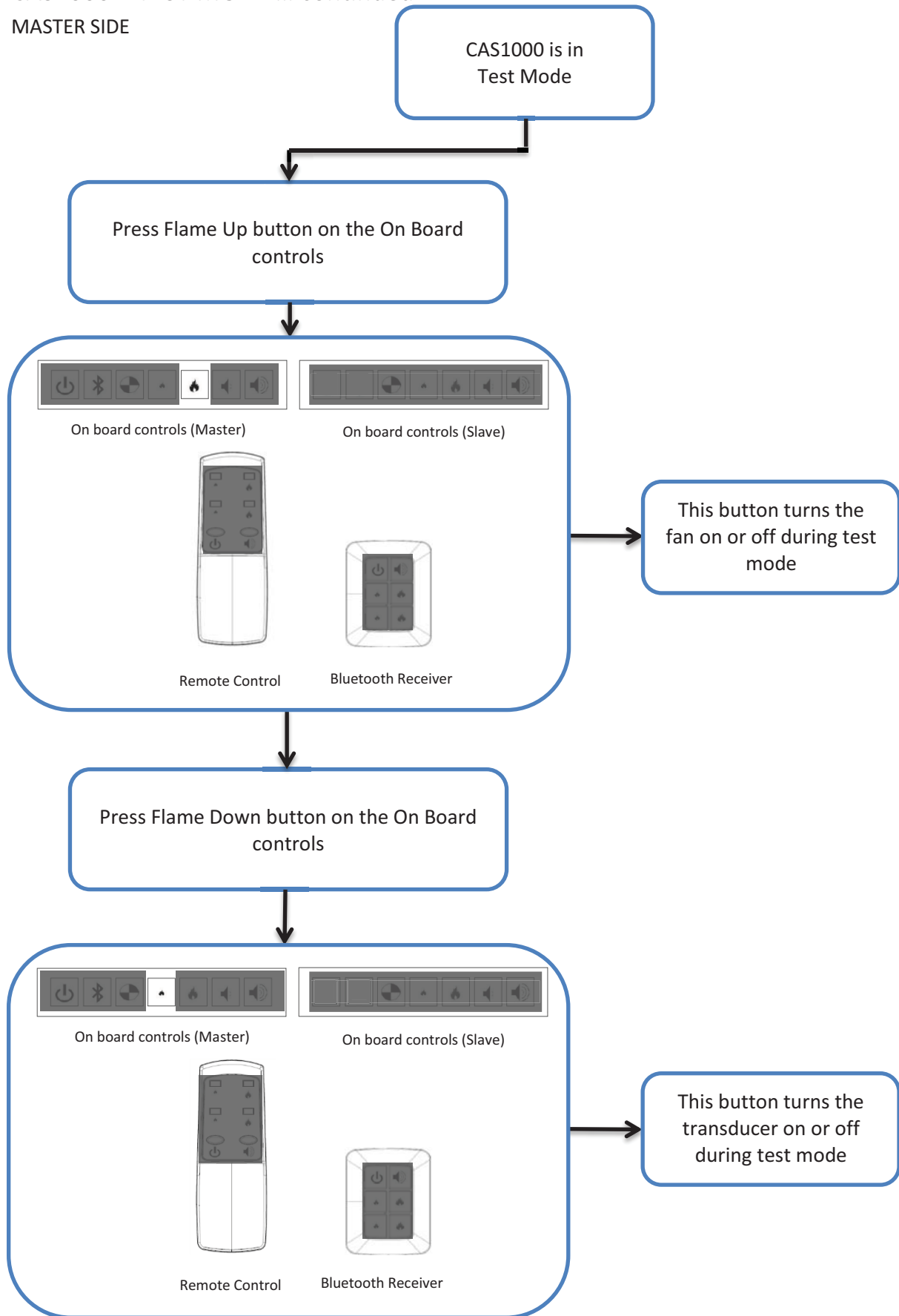
MASTER SIDE

z



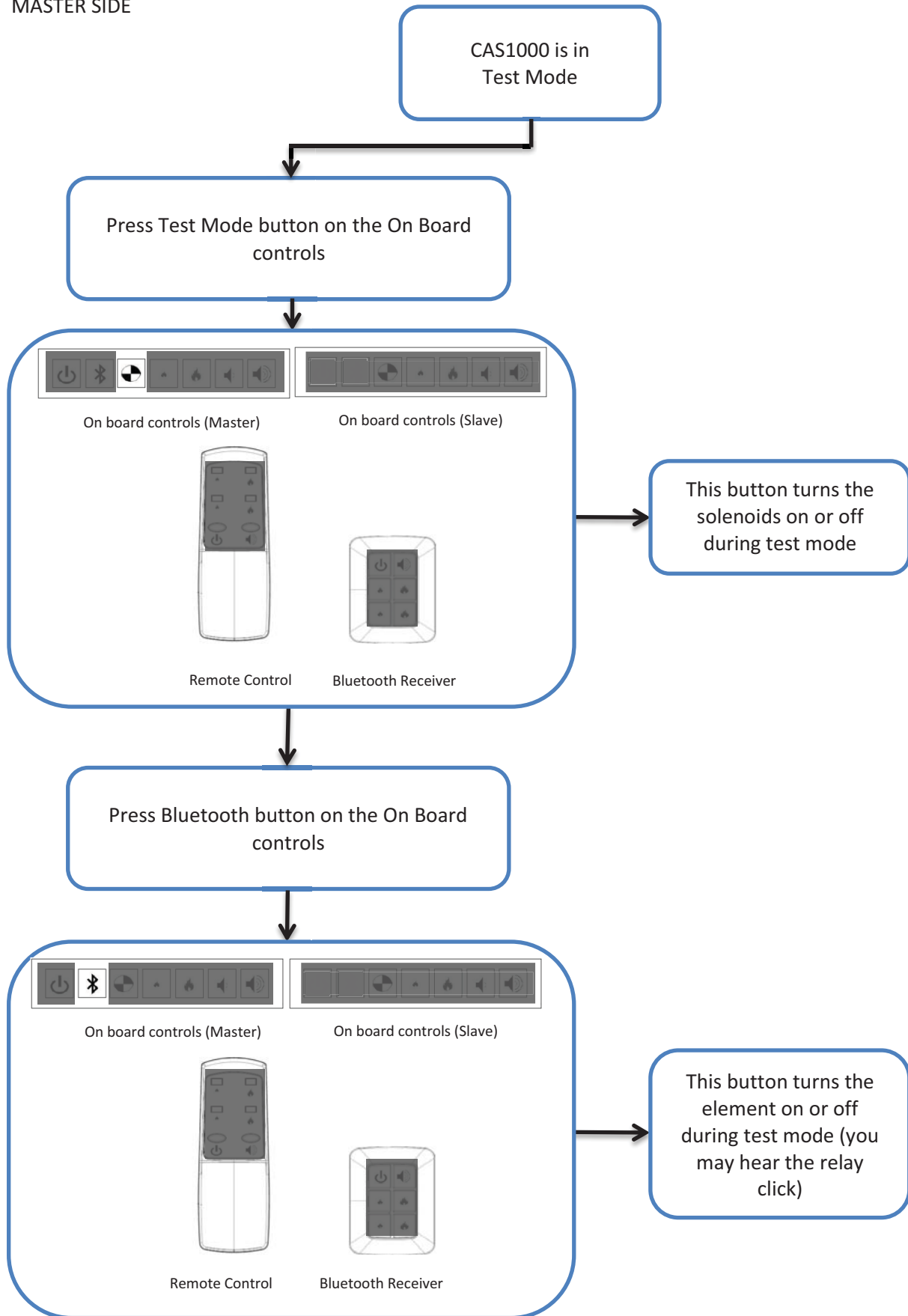
CAS1000 – TEST MODE ... continued

MASTER SIDE



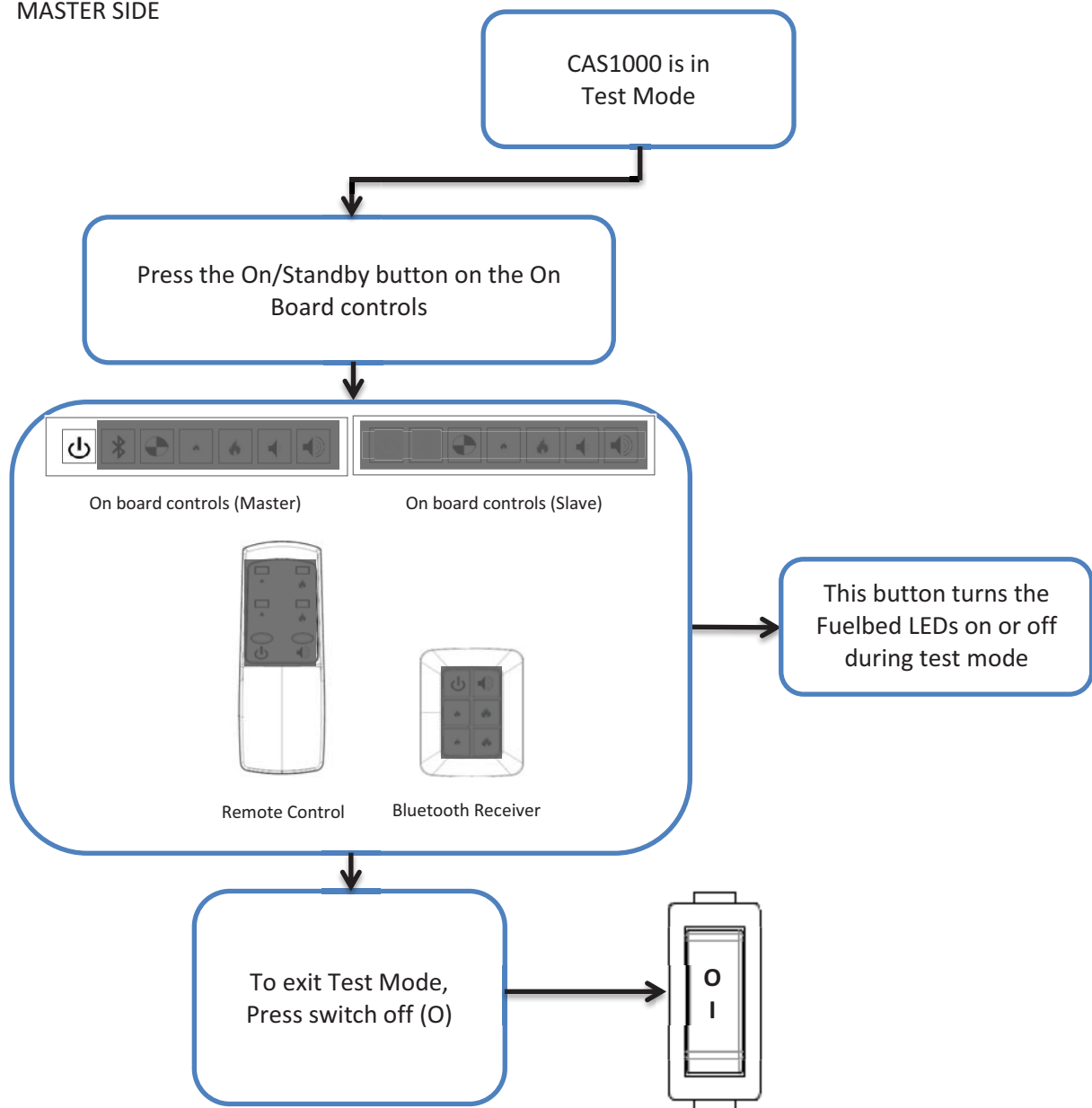
CAS1000 – TEST MODE ... continued

MASTER SIDE



CAS1000 – TEST MODE ... continued

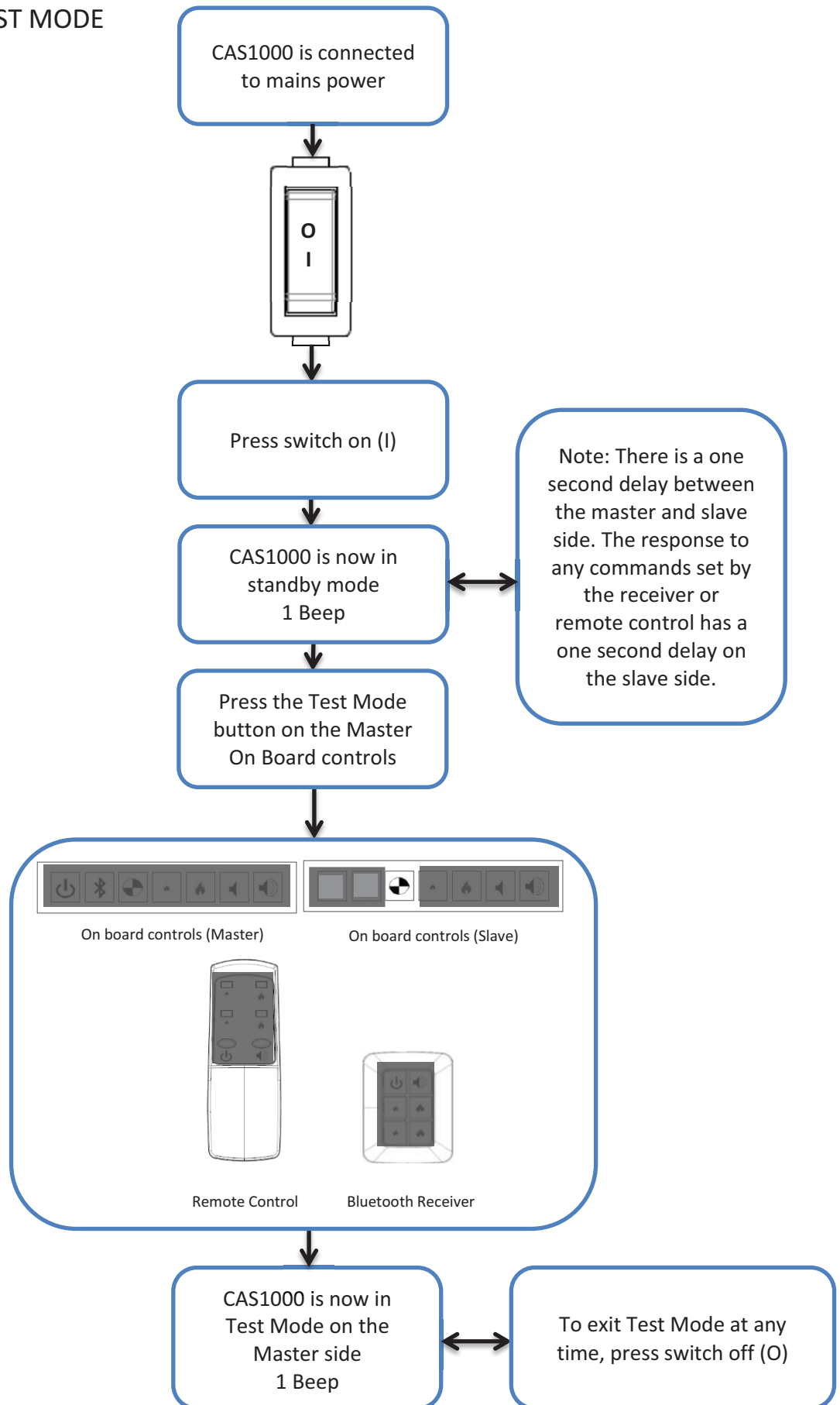
MASTER SIDE



Note: When in Test Mode, the CAS1000 will revert to standby mode if there are no buttons pressed after a period of 16 seconds. Any parts that may have been switched on during testing will also switch off.

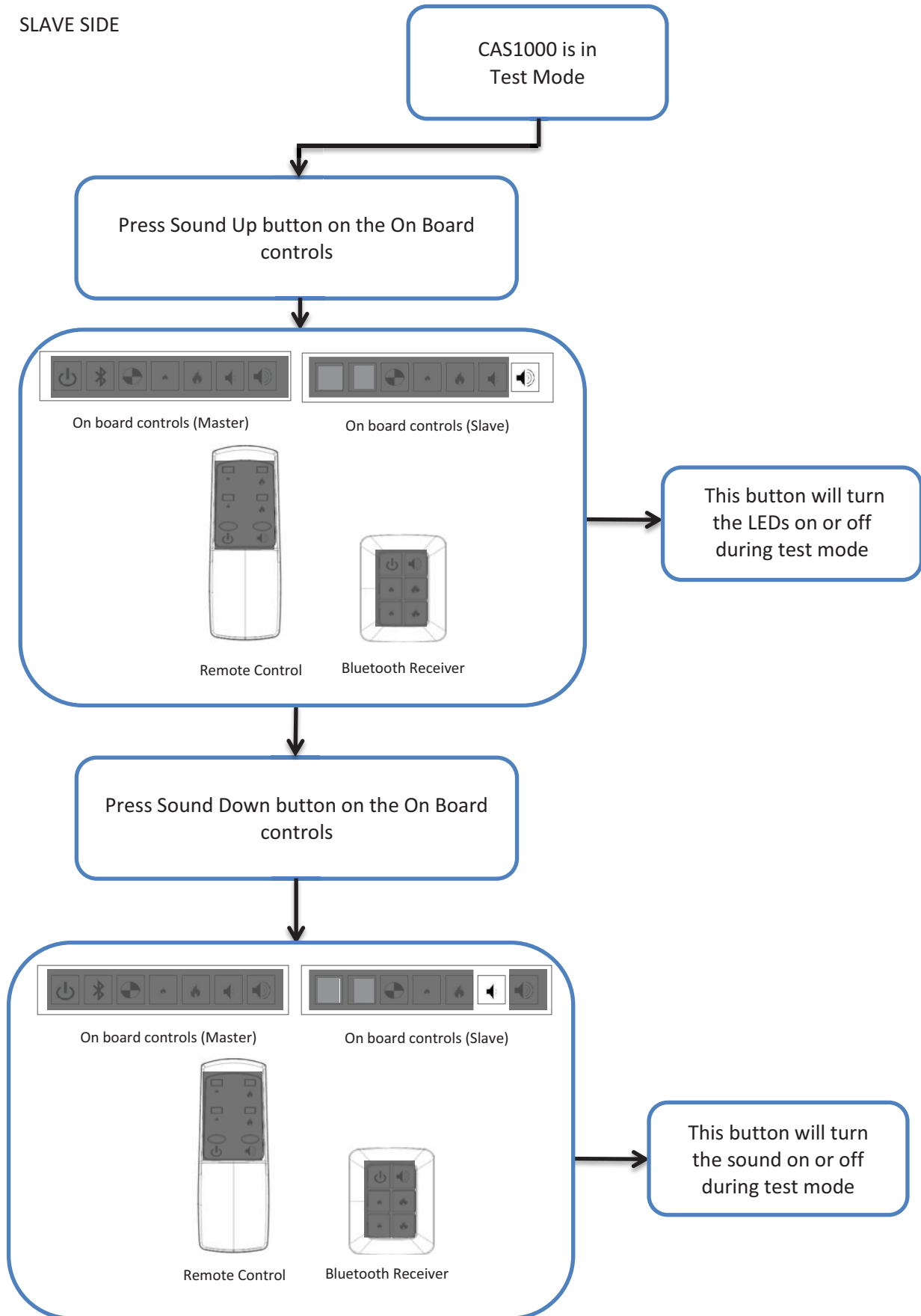
CAS1000 – TEST MODE

SLAVE SIDE



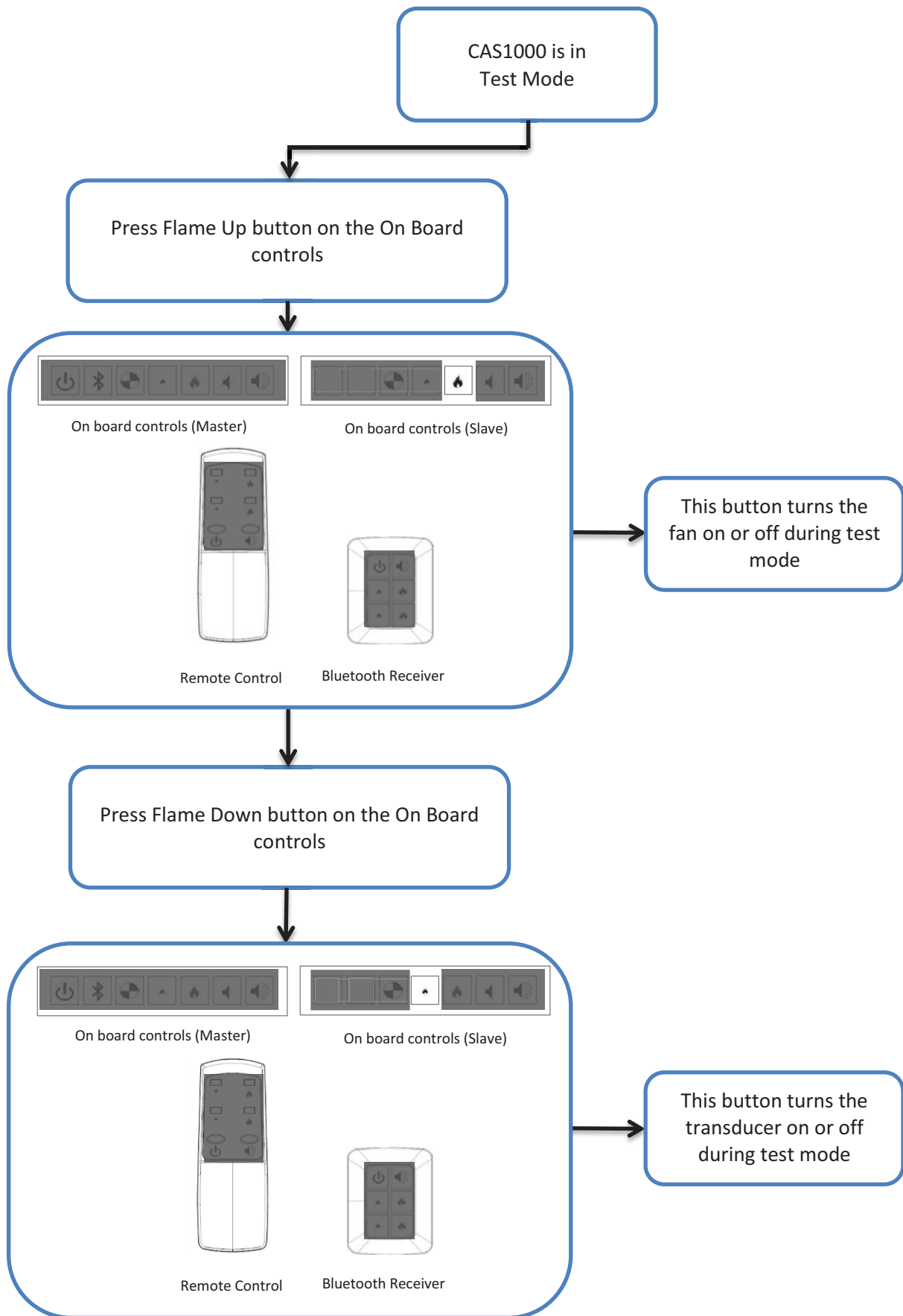
CAS1000 – TEST MODE ... continued

SLAVE SIDE



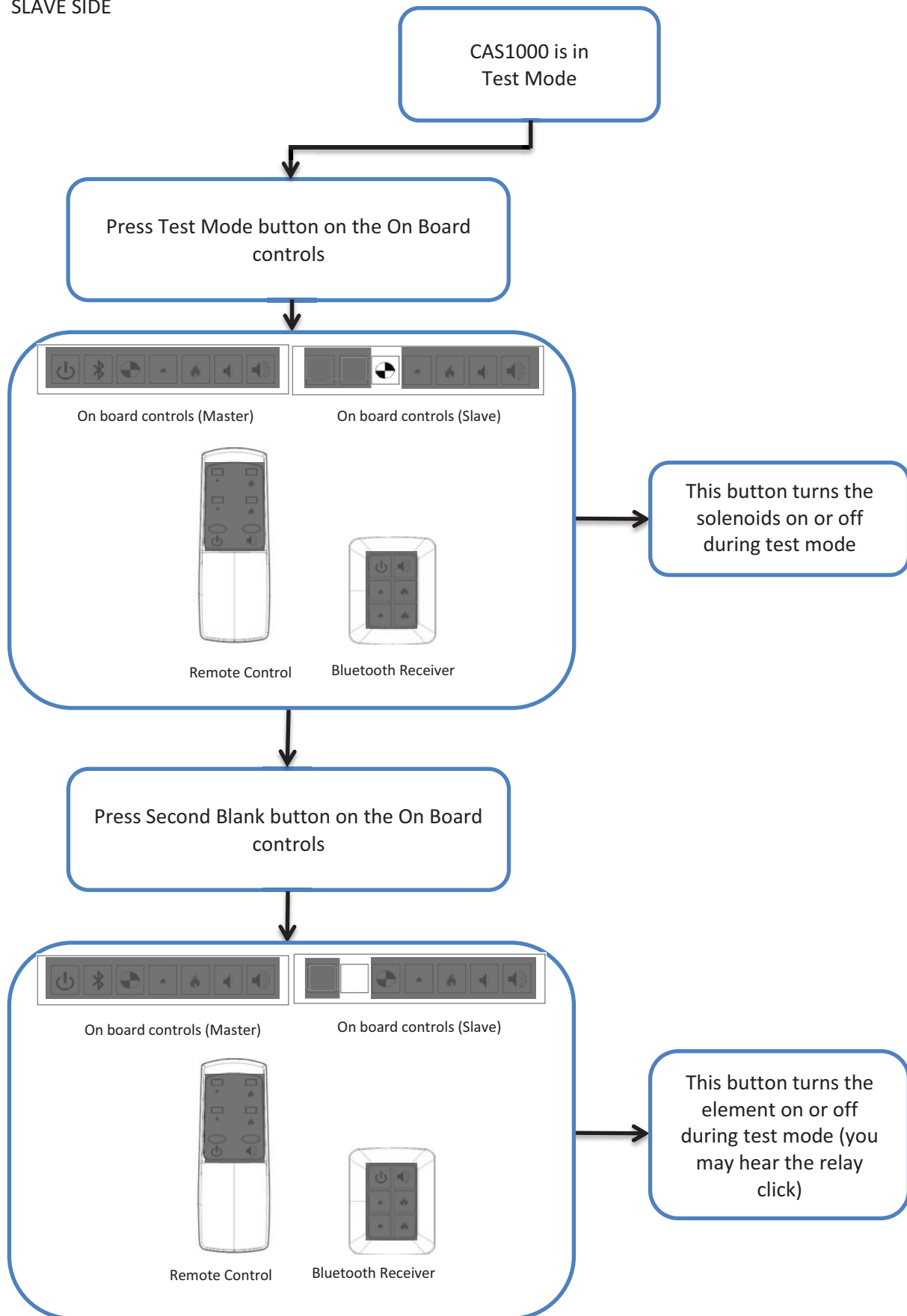
CAS1000 – TEST MODE ... continued

SLAVE SIDE



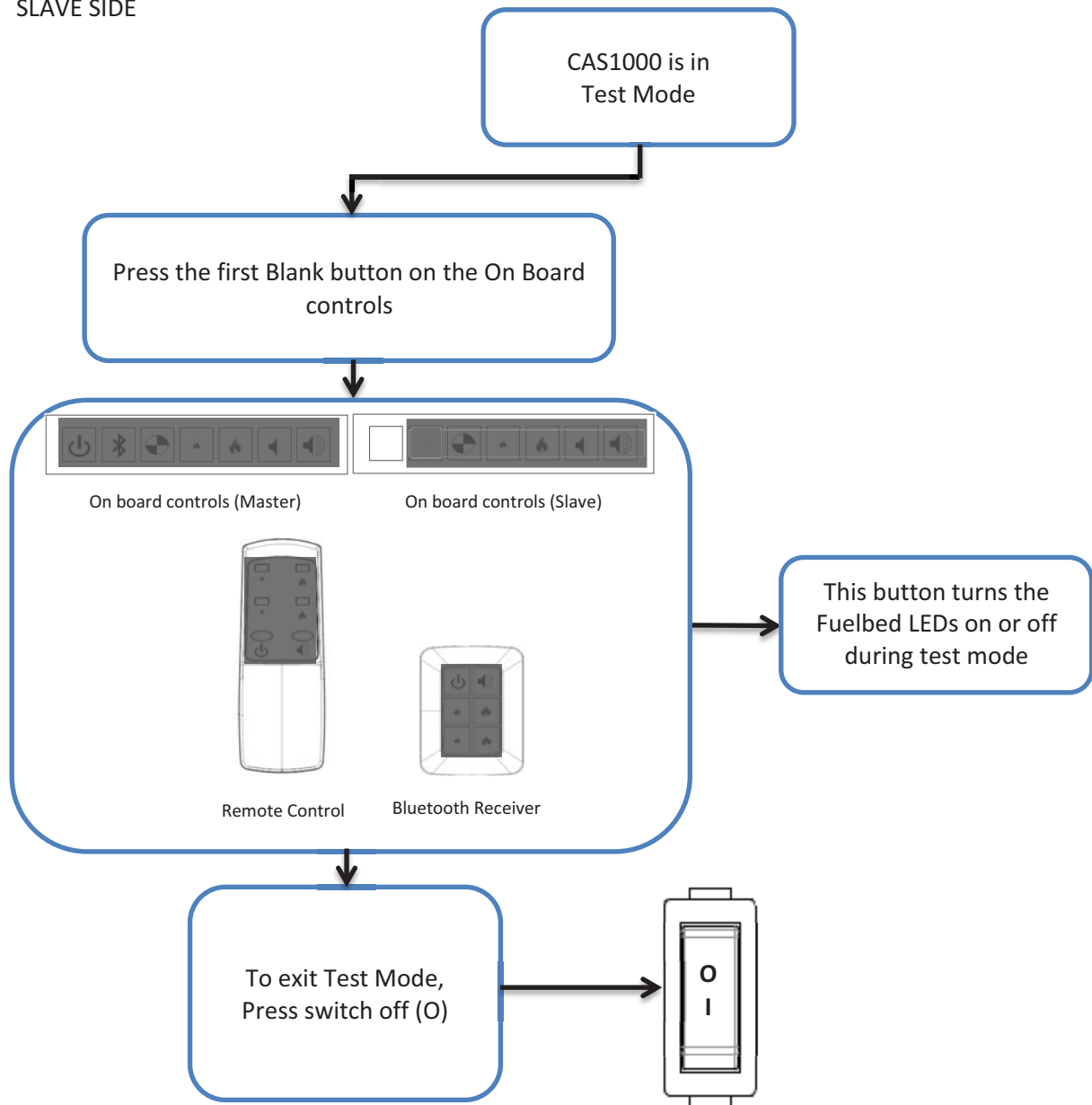
CAS1000 – TEST MODE ... continued

SLAVE SIDE



CAS1000 – TEST MODE ... continued

SLAVE SIDE



Note: When in Test Mode, the CAS1000 will revert to standby mode if there are no buttons pressed after a period of 16 seconds. Any parts that may have been switched on during testing will also switch off.

CAS1000 – REMOVING FUELBEDS

